

HANAYA CATALOG



HANYA

543 LEMASTER DRIVE,

PONTE VEDRA, FL 32082 USA

TEL: 1-904-285-7575

WWW.HANAYAINC.COM

Table of Contents

0500 SERIES HINGES.....	3
0500-0001-HNG L.....	3
0500-0001-HNG R	4
0500-0002-HNG L.....	5
0500-0002-HNG R	6
0500-0011-HNG L.....	7
0500-0011-HNG R	8
0500-0201-HNG L.....	9
0500-0201-HNG R	10
0500-0401-HNG L.....	11
0500-0401-HNG L.....	12
0500-0402-HNG L.....	13
0500-0402-HNG R	14
0500-0501-HNG	15
0500-0701-HNG	16
1000 SERIES HINGES.....	17
1000-0001-HNG L.....	17
1000-0001-HNG R	18
1000-0002-HNG L.....	19
1000-0002-HNG R	20
1000-0011-HNG L.....	21
1000-0011-HNG R	22
1000-0201-HNG L.....	23
1000-0201-HNG R	24
1000-0401-HNG L.....	25
1000-0401-HNG R	26
1000-0402-HNG L.....	27
1000-0402-HNG R	28
1000-0501-HNG	29
1000-0601-HNG	30
1000-0701-HNG	31

Table of Contents

2000 SERIES HINGES.....	32
2000-0001-HNG L.....	32
2000-0001-HNG R.....	33
2000-0002-HNG L.....	34
2000-0002-HNG R.....	35
2000-0011-HNG L.....	36
2000-0011-HNG R.....	37
2000-0401-HNG L.....	38
2000-0401-HNG R.....	39
2000-0402-HNG L.....	40
2000-0402-HNG R.....	41
2000-0501-HNG.....	42
2000-0601-HNG.....	43
2000-0701-HNG.....	44
3000 SERIES HINGES.....	45
3000-0001-HNG L.....	45
3000-0001-HNG R.....	46
3000-0002-HNG L.....	47
3000-0002-HNG R.....	48
3000-0011-HNG L.....	49
3000-0011-HNG R.....	50
3000-0401-HNG L.....	51
3000-0401-HNG R.....	52
3000-0402-HNG L.....	53
3000-0402-HNG R.....	54
3000-0403-HNG.....	55
3000-0501-HNG.....	56
3000-0601-HNG.....	57
3000-0701-HNG.....	58



0500-0001-HNG L

Torque Range

- LOW: 1.3 – 2.0 in.lb ± 25%
- MED: 2.5 – 4.0 in.lb ± 15%
- HIGH: 4.0 – 6.0 in.lb ± 15%

Overall Dimensions

- 0.86" L X 0.75" W X 0.20" H

Material

- Steel Band, Shaft
- Copper Base Grease

Friction Hinge Features

- Constant torque friction hinge.
- Available in balance or unbalance torque configurations.
- Hinge rotates 360° and provides infinite number of holding positions.
- All bands are nickel plated for extra corrosion resistance.
- Different finishes available for cosmetics requirements.
- All hinges have been tested to meet a minimum life of 30,000 cycles.
- Operating temperature: 0 – 212°F
- Smooth feel and consistent torque is maintained over the life of the hinge (+/- 15% of nominal).
- Hinges have negligible spring back with no backlash.
- All our hinges are RoHS compliant.

Lead	Under 100 ppm
Cadmium	Under 5 ppm
Mercury	Under 5 ppm
Hexavalent Chromium	Under 5 ppm

HANAYA



0500-0001-HNG R

Torque Range

- LOW: 1.3 – 2.0 in.lb ± 25%
- MED: 2.5 – 4.0 in.lb ± 15%
- HIGH: 4.0 – 6.0 in.lb ± 15%

Overall Dimensions

- 0.86" L X 0.75" W X 0.20" H

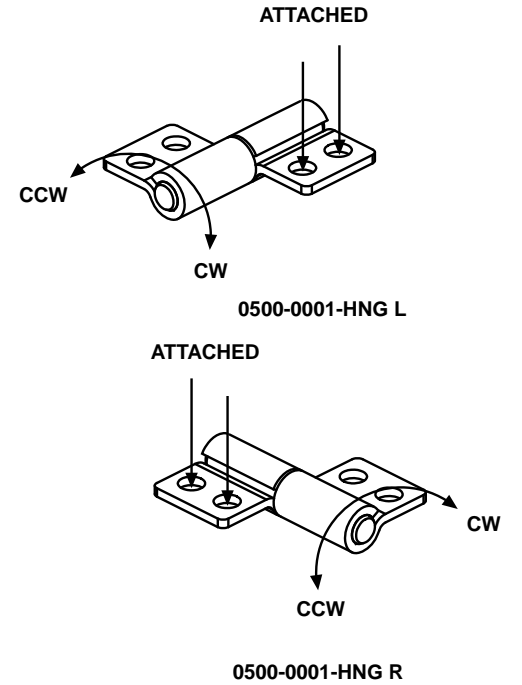
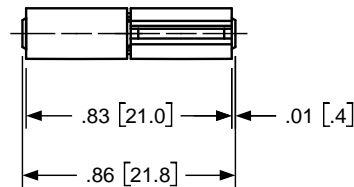
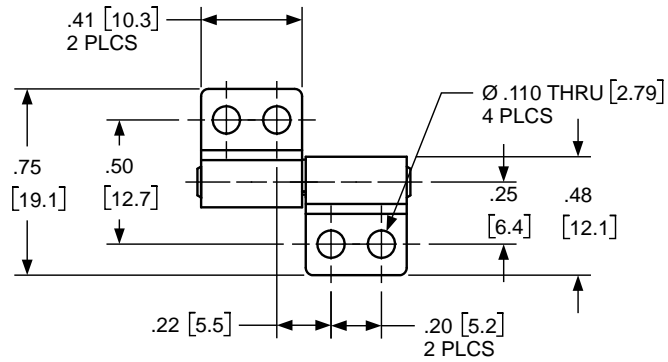
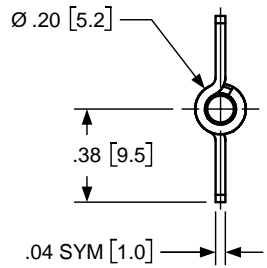
Material

- Steel Band, Shaft
- Copper Base Grease

Friction Hinge Features

- Constant torque friction hinge.
- Available in balance or unbalance torque configurations.
- Hinge rotates 360° and provides infinite number of holding positions.
- All bands are nickel plated for extra corrosion resistance.
- Different finishes available for cosmetics requirements.
- All hinges have been tested to meet a minimum life of 30,000 cycles.
- Operating temperature: 0 – 212°F
- Smooth feel and consistent torque is maintained over the life of the hinge (+/- 15% of nominal).
- Hinges have negligible spring back with no backlash.
- All our hinges are RoHS compliant.

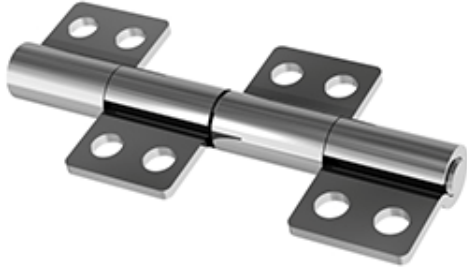
Lead	Under 100 ppm
Cadmium	Under 5 ppm
Mercury	Under 5 ppm
Hexavalent Chromium	Under 5 ppm



TORQUE SPECIFICATIONS		
PART NUMBER	CW	CCW
0500-0001-HNG L		
0500-0001-HNG R		

HANAYA		TITLE		
<small>ALL INFORMATION ON THIS PRINT ARE PROPRIETARY TO HANAYA, AND SHALL NOT BE USED IN WHOLE OR IN PART WITHOUT HANAYA'S CONSENT.</small>		ENGLISH [METRIC]		MATERIAL
		TOLERANCES		STEEL BAND & SHAFT
SUITABLE MOUNTING SCREWS		METRIC	ENGLISH	SIZE DWG NO.
FRACTIONAL	3-48 UNC	.X ±.3 MM	.XX ±.015 IN	0500-0001-HNG L & R
METRIC	M2.5 X .45	.XX ±.13 MM	.XXX ±.005 IN	
		.XXX ±.005 MM	.XXXX ±.0002 IN	
ANGLE ± 1°				

HANAYA



0500-0002-HNG L

Torque Range

- LOW: 2.5 – 4.0 in.lb ± 15%
- MED: 5.0 – 8.0 in.lb ± 15%
- HIGH: 8.0 – 12.0 in.lb ± 15%

Overall Dimensions

- 1.67" L X 0.75" W X 0.20" H

Material

- Steel Band, Shaft
- Copper Base Grease

Friction Hinge Features

- Constant torque friction hinge.
- Available in balance or unbalance torque configurations.
- Hinge rotates 360° and provides infinite number of holding positions.
- All bands are nickel plated for extra corrosion resistance.
- Different finishes available for cosmetics requirements.
- All hinges have been tested to meet a minimum life of 30,000 cycles.
- Operating temperature: 0 – 212°F
- Smooth feel and consistent torque is maintained over the life of the hinge (+/- 15% of nominal).
- Hinges have negligible spring back with no backlash.
- All our hinges are RoHS compliant.

Lead	Under 100 ppm
Cadmium	Under 5 ppm
Mercury	Under 5 ppm
Hexavalent Chromium	Under 5 ppm

HANAYA



0500-0002-HNG R

Torque Range

- LOW: 2.5 – 4.0 in.lb ± 15%
- MED: 5.0 – 8.0 in.lb ± 15%
- HIGH: 8.0 – 12.0 in.lb ± 15%

Overall Dimensions

- 1.67" L X 0.75" W X 0.20" H

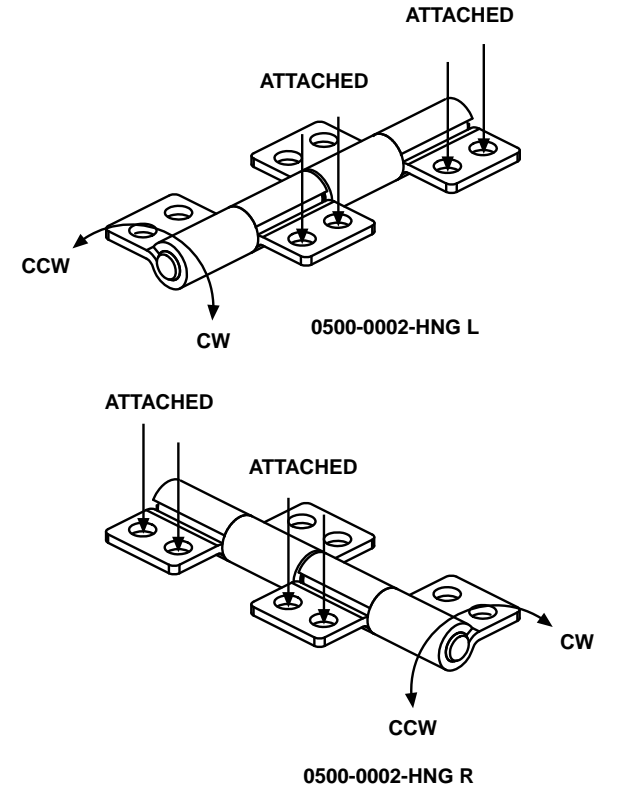
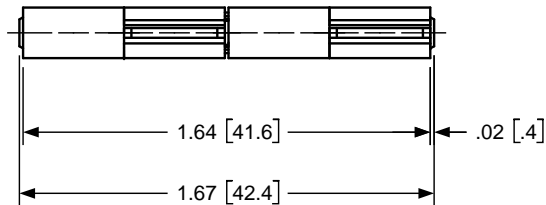
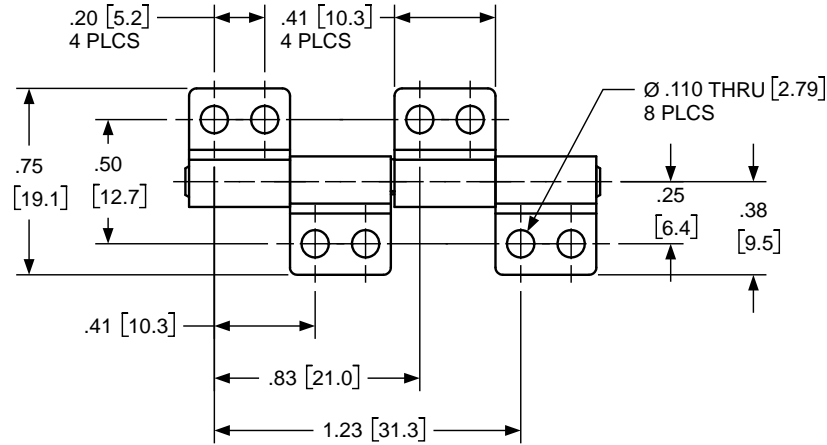
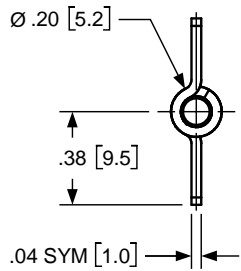
Material

- Steel Band, Shaft
- Copper Base Grease

Friction Hinge Features

- Constant torque friction hinge.
- Available in balance or unbalance torque configurations.
- Hinge rotates 360° and provides infinite number of holding positions.
- All bands are nickel plated for extra corrosion resistance.
- Different finishes available for cosmetics requirements.
- All hinges have been tested to meet a minimum life of 30,000 cycles.
- Operating temperature: 0 – 212°F
- Smooth feel and consistent torque is maintained over the life of the hinge (+/- 15% of nominal).
- Hinges have negligible spring back with no backlash.
- All our hinges are RoHS compliant.

Lead	Under 100 ppm
Cadmium	Under 5 ppm
Mercury	Under 5 ppm
Hexavalent Chromium	Under 5 ppm



TORQUE SPECIFICATIONS		
PART NUMBER	CW	CCW
0500-0002-HNG L		
0500-0002-HNG R		

HANAYA		TITLE		
<small>ALL INFORMATION ON THIS PRINT ARE PROPRIETARY TO HANAYA, AND SHALL NOT BE USED IN WHOLE OR IN PART WITHOUT HANAYA'S CONSENT.</small>		ENGLISH [METRIC]		MATERIAL
		TOLERANCES		
SUITABLE MOUNTING SCREWS		METRIC	ENGLISH	SIZE
FRACTIONAL	3-48 UNC	.X ±.3 MM	.XX ±.015 IN	DWG NO.
METRIC	M2.5 X .45	.XX ±.13 MM	.XXX ±.005 IN	
		.XXX ±.005 MM	.XXXX ±.002 IN	0500-0002-HNG L & R
		ANGLE ± 1°		

HANAYA



0500-0011-HNG L

Torque Range

- LOW: 0.7 – 1.0 in.lb \pm 30%
- MED: 1.3 – 2.0 in.lb \pm 25%
- HIGH: 2.0 – 3.0 in.lb \pm 20%

Overall Dimensions

- 0.45" L X 1.50" W X 0.20" H

Material

- Steel Band, Shaft
- Copper Base Grease

Friction Hinge Features

- Constant torque friction hinge.
- Available in balance or unbalance torque configurations.
- Hinge rotates 360° and provides infinite number of holding positions.
- All bands are nickel plated for extra corrosion resistance.
- Different finishes available for cosmetics requirements.
- All hinges have been tested to meet a minimum life of 30,000 cycles.
- Operating temperature: 0 – 212°F
- Smooth feel and consistent torque is maintained over the life of the hinge (+/- 15% of nominal).
- Hinges have negligible spring back with no backlash.
- All our hinges are RoHS compliant.

Lead	Under 100 ppm
Cadmium	Under 5 ppm
Mercury	Under 5 ppm
Hexavalent Chromium	Under 5 ppm



0500-0011-HNG R

Torque Range

- LOW: 0.7 – 1.0 in.lb \pm 30%
- MED: 1.3 – 2.0 in.lb \pm 25%
- HIGH: 2.0 – 3.0 in.lb \pm 20%

Overall Dimensions

- 0.45" L X 1.50" W X 0.20" H

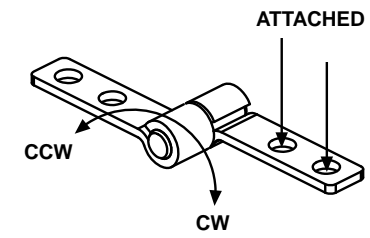
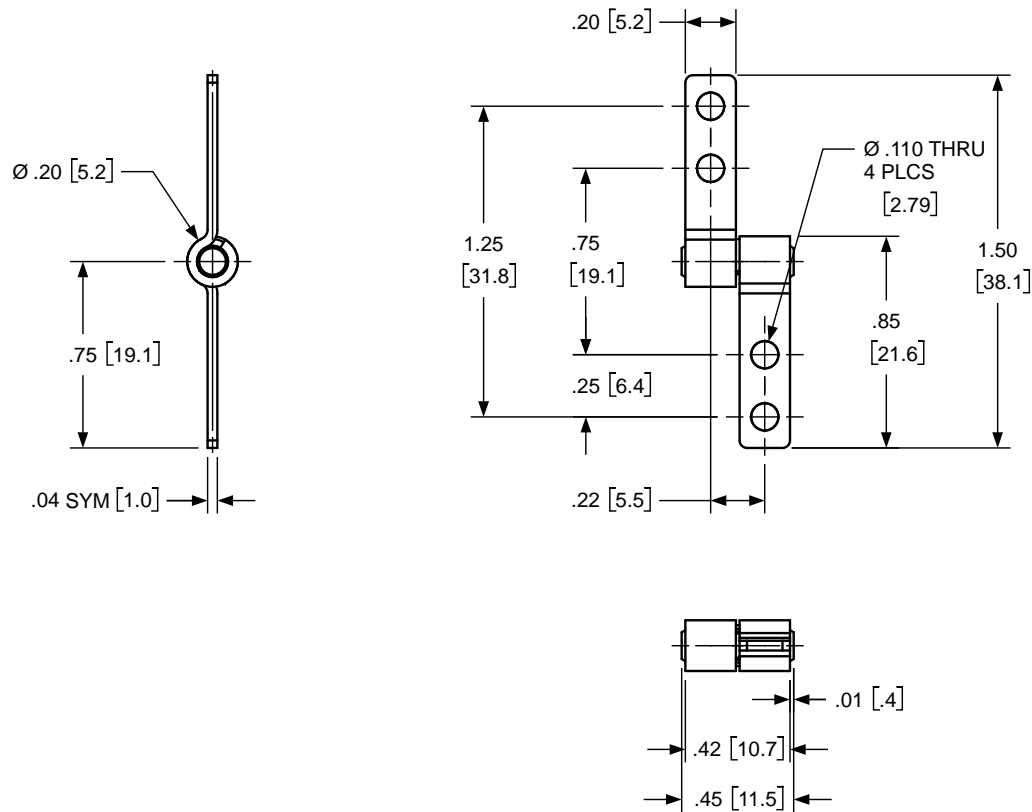
Material

- Steel Band, Shaft
- Copper Base Grease

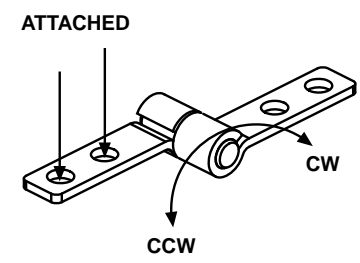
Friction Hinge Features

- Constant torque friction hinge.
- Available in balance or unbalance torque configurations.
- Hinge rotates 360° and provides infinite number of holding positions.
- All bands are nickel plated for extra corrosion resistance.
- Different finishes available for cosmetics requirements.
- All hinges have been tested to meet a minimum life of 30,000 cycles.
- Operating temperature: 0 – 212°F
- Smooth feel and consistent torque is maintained over the life of the hinge (+/- 15% of nominal).
- Hinges have negligible spring back with no backlash.
- All our hinges are RoHS compliant.

Lead	Under 100 ppm
Cadmium	Under 5 ppm
Mercury	Under 5 ppm
Hexavalent Chromium	Under 5 ppm



0500-0011-HNG L

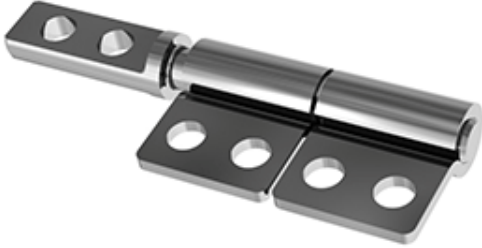


0500-0011-HNG R

TORQUE SPECIFICATIONS		
PART NUMBER	CW	CCW
0500-0011-HNG L		
0500-0011-HNG R		

HANAYA		TITLE		
<small>ALL INFORMATION ON THIS PRINT ARE PROPRIETARY TO HANAYA, AND SHALL NOT BE USED IN WHOLE OR IN PART WITHOUT HANAYA'S CONSENT.</small>		ENGLISH [METRIC]		MATERIAL
		TOLERANCES		
SUITABLE MOUNTING SCREWS		METRIC	ENGLISH	SIZE
FRACTIONAL	3-48 UNC	.X ±.3 MM	.XX ±.015 IN	DWG NO.
METRIC	M2.5 X .45	.XX ±.13 MM	.XXX ±.005 IN	
		.XXX ±.005 MM	.XXXX ±.0002 IN	0500-0011-HNG L & R
		ANGLE ± 1°		

HANAYA



0500-0201-HNG L

Torque Range

- LOW: 2.5 – 4.0 in.lb ± 15%
- MED: 5.0 – 8.0 in.lb ± 15%
- HIGH: 8.0 – 12.0 in.lb ± 15%

Overall Dimensions

- 1.46" L X 0.48" W X 0.20" H

Material

- Steel Band, Shaft
- Copper Base Grease

Friction Hinge Features

- Constant torque friction hinge.
- Available in balance or unbalance torque configurations.
- Hinge rotates 360° and provides infinite number of holding positions.
- All bands are nickel plated for extra corrosion resistance.
- Different finishes available for cosmetics requirements.
- All hinges have been tested to meet a minimum life of 30,000 cycles.
- Operating temperature: 0 – 212°F
- Smooth feel and consistent torque is maintained over the life of the hinge (+/- 15% of nominal).
- Hinges have negligible spring back with no backlash.
- All our hinges are RoHS compliant.

Lead	Under 100 ppm
Cadmium	Under 5 ppm
Mercury	Under 5 ppm
Hexavalent Chromium	Under 5 ppm

HANAYA



0500-0201-HNG R

Torque Range

- LOW: 2.5 – 4.0 in.lb \pm 15%
- MED: 5.0 – 8.0 in.lb \pm 15%
- HIGH: 8.0 – 12.0 in.lb \pm 15%

Overall Dimensions

- 1.46" L X 0.48" W X 0.20" H

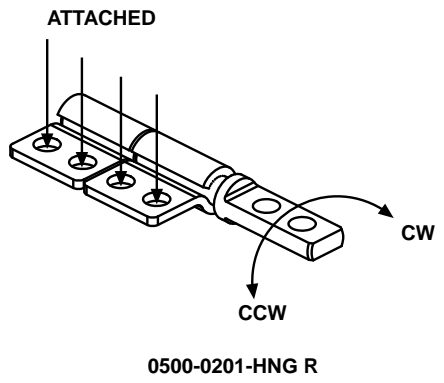
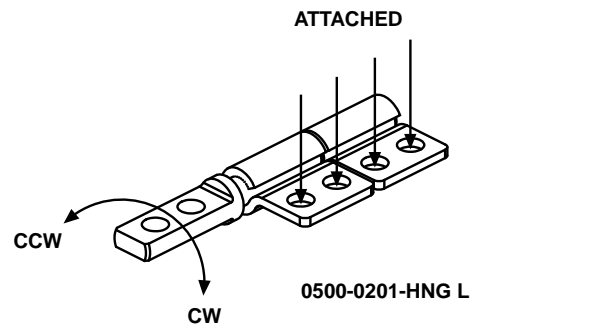
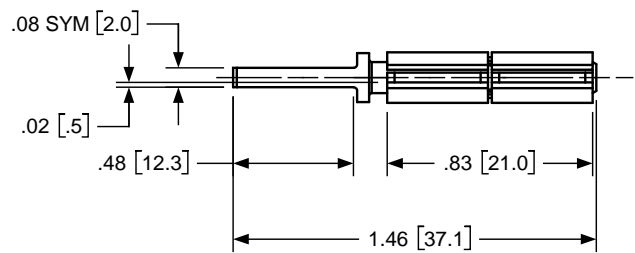
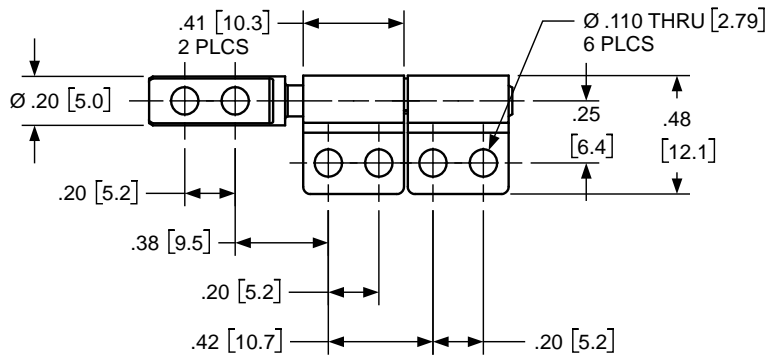
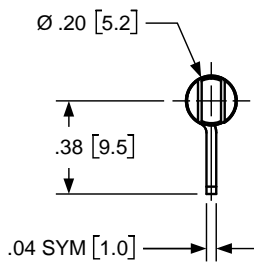
Material

- Steel Band, Shaft
- Copper Base Grease

Friction Hinge Features

- Constant torque friction hinge.
- Available in balance or unbalance torque configurations.
- Hinge rotates 360° and provides infinite number of holding positions.
- All bands are nickel plated for extra corrosion resistance.
- Different finishes available for cosmetics requirements.
- All hinges have been tested to meet a minimum life of 30,000 cycles.
- Operating temperature: 0 – 212°F
- Smooth feel and consistent torque is maintained over the life of the hinge (+/- 15% of nominal).
- Hinges have negligible spring back with no backlash.
- All our hinges are RoHS compliant.

Lead	Under 100 ppm
Cadmium	Under 5 ppm
Mercury	Under 5 ppm
Hexavalent Chromium	Under 5 ppm



TORQUE SPECIFICATIONS		
PART NUMBER	CW	CCW
0500-0201-HNG L		
0500-0201-HNG R		

HANAYA		TITLE		
<small>ALL INFORMATION ON THIS PRINT ARE PROPRIETARY TO HANAYA, AND SHALL NOT BE USED IN WHOLE OR IN PART WITHOUT HANAYA'S CONSENT.</small>		ENGLISH / METRIC		MATERIAL
		TOLERANCES		STEEL BAND & SHAFT
SUITABLE MOUNTING SCREWS		METRIC	ENGLISH	SIZE
FRACTIONAL	3-48 UNC	.X ±.3 MM	.XX ±.015 IN	DWG NO.
METRIC	M2.5 X .45	.XX ±.13 MM	.XXX ±.005 IN	
		.XXX ±.005 MM	.XXXX ±.0002 IN	0500-0201-HNG L & R
		ANGLE ± 1°		

HANAYA



0500-0401-HNG L

Torque Range

- LOW: 1.3 – 2.0 in.lb ± 25%
- MED: 2.5 – 4.0 in.lb ± 15%
- HIGH: 4.0 – 6.0 in.lb ± 15%

Overall Dimensions

- 1.09" L X 0.48" W X 0.22" H

Material

- Steel Band, Shaft
- Zinc Housing
- Copper Base Grease

Friction Hinge Features

- Constant torque friction hinge.
- Available in balance or unbalance torque configurations.
- Hinge rotates 360° and provides infinite number of holding positions.
- All bands are nickel plated for extra corrosion resistance.
- Different finishes available for cosmetics requirements.
- All hinges have been tested to meet a minimum life of 30,000 cycles.
- Operating temperature: 0 – 212°F
- Smooth feel and consistent torque is maintained over the life of the hinge (+/- 15% of nominal).
- Hinges have negligible spring back with no backlash.
- All our hinges are RoHS compliant.

Lead	Under 100 ppm
Cadmium	Under 5 ppm
Mercury	Under 5 ppm
Hexavalent Chromium	Under 5 ppm

HANAYA



0500-0401-HNG R

Torque Range

- LOW: 1.3 – 2.0 in.lb ± 25%
- MED: 2.5 – 4.0 in.lb ± 15%
- HIGH: 4.0 – 6.0 in.lb ± 15%

Overall Dimensions

- 1.09" L X 0.48" W X 0.22" H

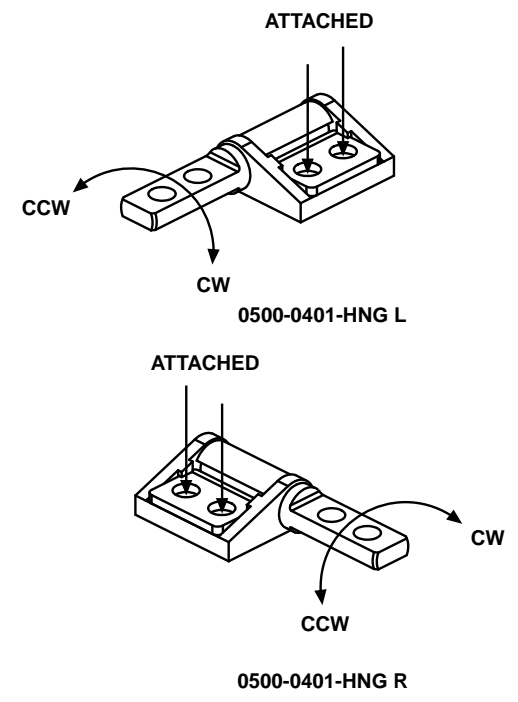
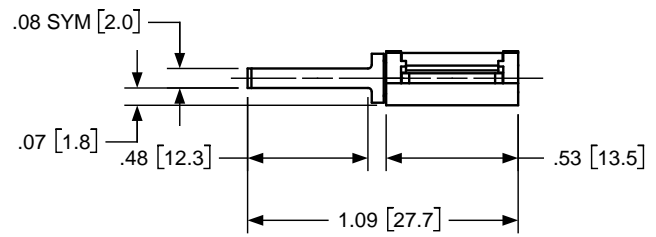
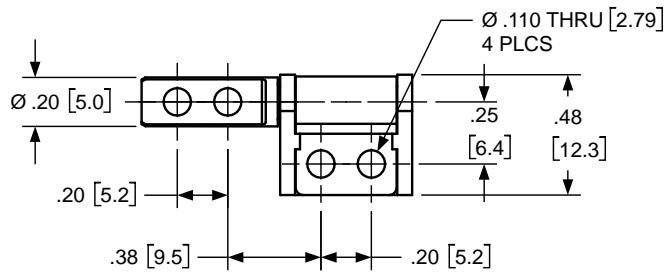
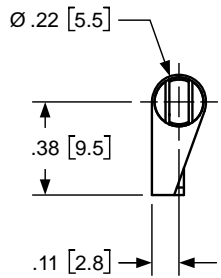
Material

- Steel Band, Shaft
- Zinc Housing
- Copper Base Grease

Friction Hinge Features

- Constant torque friction hinge.
- Available in balance or unbalance torque configurations.
- Hinge rotates 360° and provides infinite number of holding positions.
- All bands are nickel plated for extra corrosion resistance.
- Different finishes available for cosmetics requirements.
- All hinges have been tested to meet a minimum life of 30,000 cycles.
- Operating temperature: 0 – 212°F
- Smooth feel and consistent torque is maintained over the life of the hinge (+/- 15% of nominal).
- Hinges have negligible spring back with no backlash.
- All our hinges are RoHS compliant.

Lead	Under 100 ppm
Cadmium	Under 5 ppm
Mercury	Under 5 ppm
Hexavalent Chromium	Under 5 ppm



TORQUE SPECIFICATIONS		
PART NUMBER	CW	CCW
0500-0401-HNG L		
0500-0401-HNG R		

HANAYA		TITLE		
<small>ALL INFORMATION ON THIS PRINT ARE PROPRIETARY TO HANAYA, AND SHALL NOT BE USED IN WHOLE OR IN PART WITHOUT HANAYA'S CONSENT.</small>		ENGLISH [METRIC]		MATERIAL
		TOLERANCES		ZINC HOUSING STEEL BAND & SHAFT
SUITABLE MOUNTING SCREWS		METRIC	ENGLISH	SIZE
FRACTIONAL	3-48 UNC	.X ±.3 MM	.XX ±.015 IN	DWG NO. 0500-0401-HNG L & R
METRIC	M2.5 X .45	.XX ±.13 MM	.XXX ±.005 IN	
		.XXX ±.005 MM	.XXXX ±.0002 IN	
		ANGLE ± 1°		

HANAYA



0500-0402-HNG L

Torque Range

- LOW: 1.3 – 2.0 in.lb ± 25%
- MED: 2.5 – 4.0 in.lb ± 15%
- HIGH: 4.0 – 6.0 in.lb ± 15%

Overall Dimensions

- 0.95" L X 0.75" W X 0.22" H

Material

- Steel Band, Shaft
- Zinc Housing
- Copper Base Grease

Friction Hinge Features

- Constant torque friction hinge.
- Available in balance or unbalance torque configurations.
- Hinge rotates 360° and provides infinite number of holding positions.
- All bands are nickel plated for extra corrosion resistance.
- Different finishes available for cosmetics requirements.
- All hinges have been tested to meet a minimum life of 30,000 cycles.
- Operating temperature: 0 – 212°F
- Smooth feel and consistent torque is maintained over the life of the hinge (+/- 15% of nominal).
- Hinges have negligible spring back with no backlash.
- All our hinges are RoHS compliant.

Lead	Under 100 ppm
Cadmium	Under 5 ppm
Mercury	Under 5 ppm
Hexavalent Chromium	Under 5 ppm

HANAYA



0500-0402-HNG R

Torque Range

- LOW: 1.3 – 2.0 in.lb ± 25%
- MED: 2.5 – 4.0 in.lb ± 15%
- HIGH: 4.0 – 6.0 in.lb ± 15%

Overall Dimensions

- 0.95" L X 0.75" W X 0.22" H

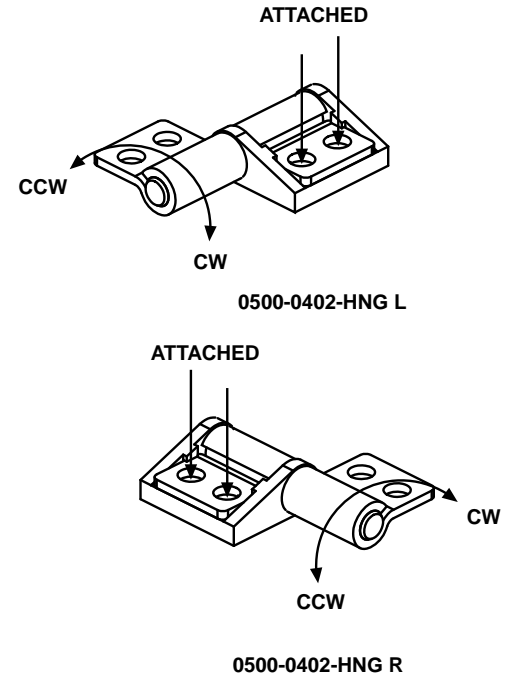
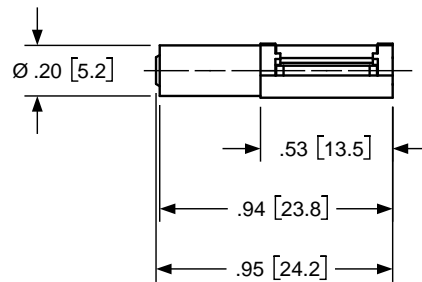
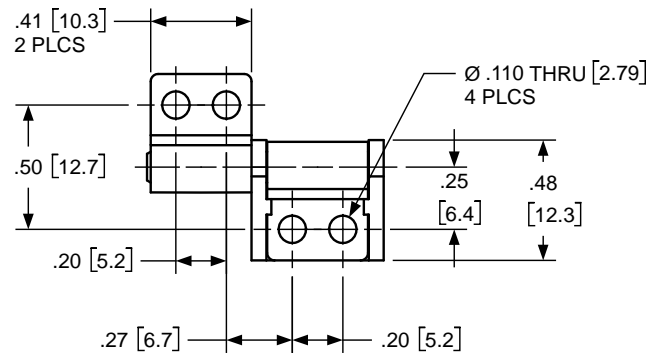
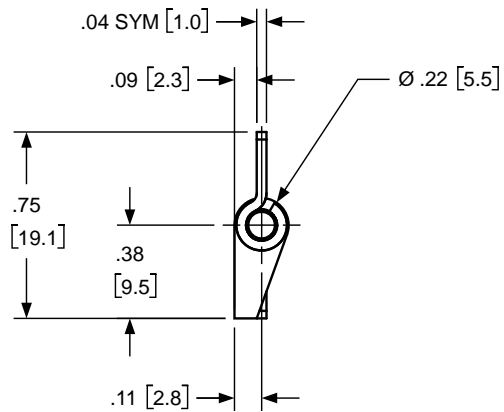
Material

- Steel Band, Shaft
- Zinc Housing
- Copper Base Grease

Friction Hinge Features

- Constant torque friction hinge.
- Available in balance or unbalance torque configurations.
- Hinge rotates 360° and provides infinite number of holding positions.
- All bands are nickel plated for extra corrosion resistance.
- Different finishes available for cosmetics requirements.
- All hinges have been tested to meet a minimum life of 30,000 cycles.
- Operating temperature: 0 – 212°F
- Smooth feel and consistent torque is maintained over the life of the hinge (+/- 15% of nominal).
- Hinges have negligible spring back with no backlash.
- All our hinges are RoHS compliant.

Lead	Under 100 ppm
Cadmium	Under 5 ppm
Mercury	Under 5 ppm
Hexavalent Chromium	Under 5 ppm



TORQUE SPECIFICATIONS

PART NUMBER	CW	CCW
0500-0402-HNG L		
0500-0402-HNG R		

HANAYA		TITLE			
<small>ALL INFORMATION ON THIS PRINT ARE PROPRIETARY TO HANAYA, AND SHALL NOT BE USED IN WHOLE OR IN PART WITHOUT HANAYA'S CONSENT.</small>		ENGLISH [METRIC]		MATERIAL	
		TOLERANCES		ZINC HOUSING STEEL BAND & SHAFT	
SUITABLE MOUNTING SCREWS		METRIC	ENGLISH	SIZE	DWG NO.
FRACTIONAL	3-48 UNC	.X ±.3 MM .XX ±.13 MM .XXX ±.005 MM	.XX ±.015 IN .XXX ±.005 IN .XXXX ±.0002 IN	B	0500-0402-HNG L & R
METRIC	M2.5 X .45	ANGLE ± 1°			

HANAYA



0500-0501-HNG

Torque Range

- LOW: 1.0 in.lb \pm 30%
- MED: 2.0 in.lb \pm 25%
- HIGH: 3.0 in.lb \pm 20%

Overall Dimensions

- 1.57" L X 0.20" W X 0.20" H

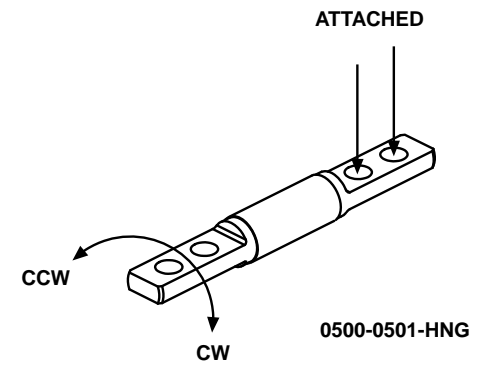
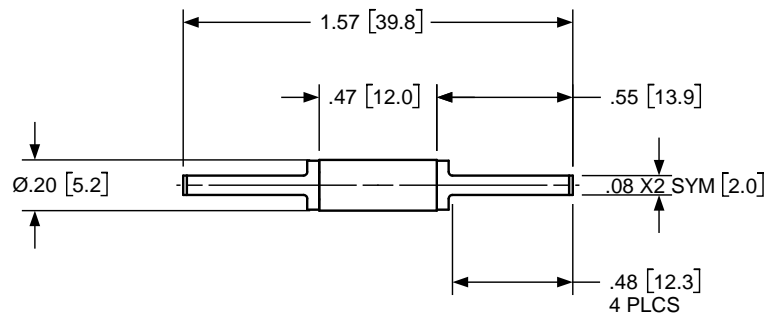
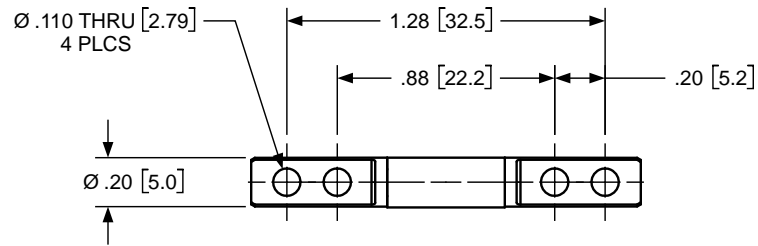
Material

- Steel Band, Shaft
- Copper Base Grease

Friction Hinge Features

- Constant torque friction hinge.
- Available in balance torque configuration.
- Hinge rotates 360° and provides infinite number of holding positions.
- All bands are nickel plated for extra corrosion resistance.
- Different finishes available for cosmetics requirements.
- All hinges have been tested to meet a minimum life of 30,000 cycles.
- Operating temperature: 0 – 212°F
- Smooth feel and consistent torque is maintained over the life of the hinge (+/- 15% of nominal).
- Hinges have negligible spring back with no backlash.
- All our hinges are RoHS compliant.

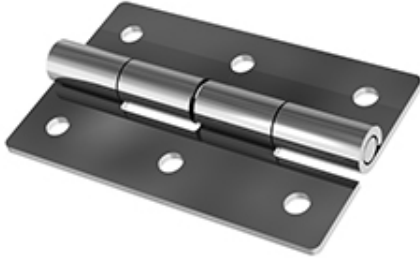
Lead	Under 100 ppm
Cadmium	Under 5 ppm
Mercury	Under 5 ppm
Hexavalent Chromium	Under 5 ppm



TORQUE SPECIFICATIONS		
PART NUMBER	CW	CCW
0500-0501-HNG		

HANAYA		TITLE		
<small>ALL INFORMATION ON THIS PRINT ARE PROPRIETARY TO HANAYA, AND SHALL NOT BE USED IN WHOLE OR IN PART WITHOUT HANAYA'S CONSENT.</small>		ENGLISH / METRIC		MATERIAL
		TOLERANCES		STEEL BAND & SHAFT
SUITABLE MOUNTING SCREWS		METRIC	ENGLISH	SIZE DWG NO
FRACTIONAL	3-48 UNC	.X ±.3 MM .XX ±.13 MM .XXX ±.005 MM	.XX ±.015 IN .XXX ±.005 IN .XXXX ±.0002 IN	B 0500-0501-HNG
METRIC	M2.5 X .45	ANGLE ± 1°		

HANAYA



0500-0701-HNG

Torque Range

- LOW: 2.5 – 4.0 in.lb ± 15%
- MED: 5.0 – 8.0 in.lb ± 15%
- HIGH: 8.0 – 12.0 in.lb ± 15%

Overall Dimensions

- 1.63" L X 1.00" W X 0.20" H

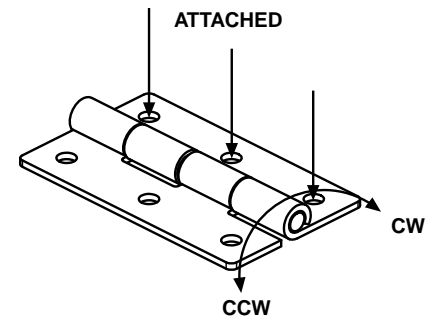
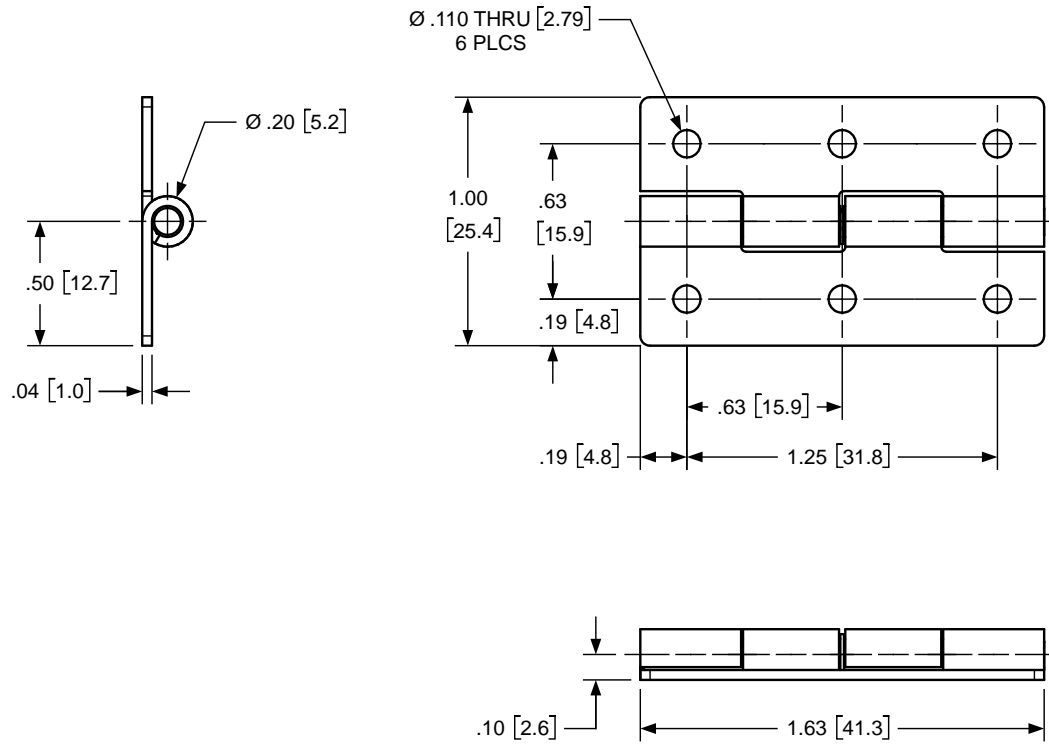
Material

- Steel Band, Shaft
- Copper Base Grease

Friction Hinge Features

- Constant torque friction hinge.
- Available in unbalance torque configurations.
- Hinge rotates 360° and provides infinite number of holding positions.
- All bands are nickel plated for extra corrosion resistance.
- Different finishes available for cosmetics requirements.
- All hinges have been tested to meet a minimum life of 30,000 cycles.
- Operating temperature: 0 – 212°F
- Smooth feel and consistent torque is maintained over the life of the hinge (+/- 15% of nominal).
- Hinges have negligible spring back with no backlash.
- All our hinges are RoHS compliant.

Lead	Under 100 ppm
Cadmium	Under 5 ppm
Mercury	Under 5 ppm
Hexavalent Chromium	Under 5 ppm



0500-0701-HNG

TORQUE SPECIFICATIONS		
PART NUMBER	CW	CCW
0500-0701-HNG		

HANAYA		TITLE		
<small>ALL INFORMATION ON THIS PRINT ARE PROPRIETARY TO HANAYA, AND SHALL NOT BE USED IN WHOLE OR IN PART WITHOUT HANAYA'S CONSENT.</small>		ENGLISH / METRIC		MATERIAL
		TOLERANCES		
SUITABLE MOUNTING SCREWS		METRIC	ENGLISH	SIZE
FRACTIONAL	3-48 UNC	.X ±.3 MM	.XX ±.015 IN	DWG NO
METRIC	M2.5 X .45	.XX ±.13 MM	.XXX ±.005 IN	0500-0701-HNG
		.XXX ±.005 MM	.XXXX ±.0002 IN	
		ANGLE ± 1°		

HANAYA



1000-0001-HNG L

Torque Range

- LOW: 5.0 – 8.0 in.lb ± 15%
- MED: 7.0 – 10.0 in.lb ± 15%
- HIGH: 9.0 – 12.0 in.lb ± 15%

Overall Dimensions

- 1.08" L X 1.00" W X .28" H

Material

- Steel Band, Shaft
- Copper Base Grease

Friction Hinge Features

- Constant torque friction hinge.
- Available in balance or unbalance torque configurations.
- Hinge rotates 360° and provides infinite number of holding positions.
- All bands are nickel plated for extra corrosion resistance.
- Different finishes available for cosmetics requirements.
- All hinges have been tested to meet a minimum life of 30,000 cycles.
- Operating temperature: 0 – 212°F
- Smooth feel and consistent torque is maintained over the life of the hinge (+/- 15% of nominal).
- Hinges have negligible spring back with no backlash.
- All our hinges are RoHS compliant.

Lead	Under 100 ppm
Cadmium	Under 5 ppm
Mercury	Under 5 ppm
Hexavalent Chromium	Under 5 ppm



1000-0001-HNG R

Torque Range

- LOW: 5.0 – 8.0 in.lb ± 15%
- MED: 7.0 – 10.0 in.lb ± 15%
- HIGH: 9.0 – 12.0 in.lb ± 15%

Overall Dimensions

- 1.08" L X 1.00" W X 0.28" H

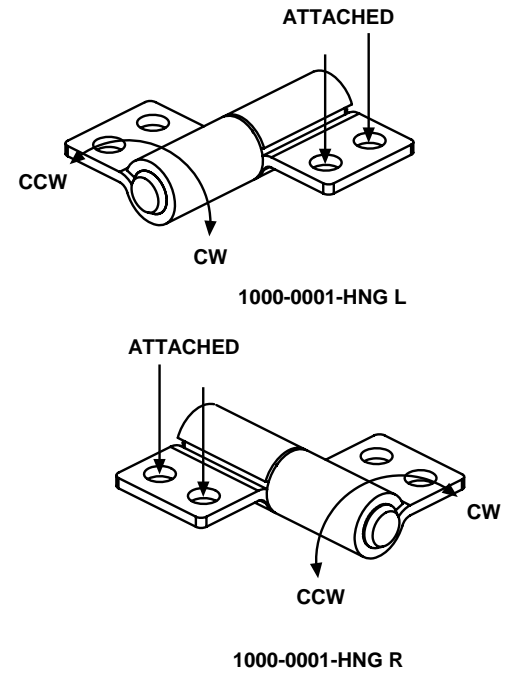
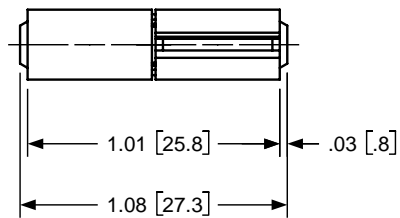
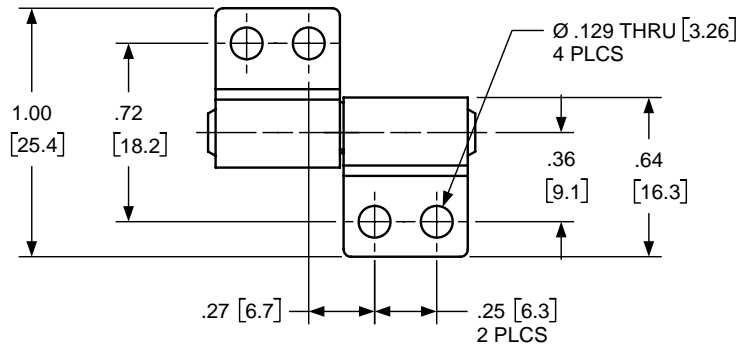
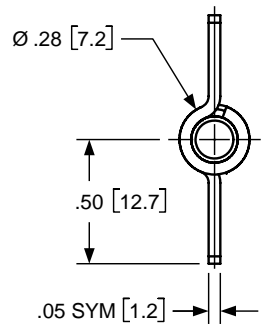
Material

- Steel Band, Shaft
- Copper Base Grease

Friction Hinge Features

- Constant torque friction hinge.
- Available in balance or unbalance torque configurations.
- Hinge rotates 360° and provides infinite number of holding positions.
- All bands are nickel plated for extra corrosion resistance.
- Different finishes available for cosmetics requirements.
- All hinges have been tested to meet a minimum life of 30,000 cycles.
- Operating temperature: 0 – 212°F
- Smooth feel and consistent torque is maintained over the life of the hinge (+/- 15% of nominal).
- Hinges have negligible spring back with no backlash.
- All our hinges are RoHS compliant.

Lead	Under 100 ppm
Cadmium	Under 5 ppm
Mercury	Under 5 ppm
Hexavalent Chromium	Under 5 ppm



TORQUE SPECIFICATIONS

PART NUMBER	CW	CCW
1000-0001-HNG L		
1000-0001-HNG R		

HANAYA		TITLE			
<small>ALL INFORMATION ON THIS PRINT ARE PROPRIETARY TO HANAYA, AND SHALL NOT BE USED IN WHOLE OR IN PART WITHOUT HANAYA'S CONSENT.</small>		ENGLISH [METRIC]		MATERIAL	
		TOLERANCES		STEEL BAND & SHAFT	
SUITABLE MOUNTING SCREWS		METRIC	ENGLISH	SIZE	DWG NO
FRACTIONAL	4-40 UNC	.X ±.3 MM	.XX ±.015 IN	B	1000-0001-HNG L & R
METRIC	M3 X 0.5	.XX ±.13 MM	.XXX ±.005 IN		
		.XXX ±.005 MM	.XXXX ±.0002 IN		
ANGLE ± 1°					

HANAYA



1000-0002-HNG L

Torque Range

- LOW: 10.0 – 16.0 in.lb ± 15%
- MED: 14.0 – 20.0 in.lb ± 15%
- HIGH: 18.0 – 24.0 in.lb ± 15%

Overall Dimensions

- 2.08" L X 1.00" W X 0.28" H

Material

- Steel Band, Shaft
- Copper Base Grease

Friction Hinge Features

- Constant torque friction hinge.
- Available in balance or unbalance torque configurations.
- Hinge rotates 360° and provides infinite number of holding positions.
- All bands are nickel plated for extra corrosion resistance.
- Different finishes available for cosmetics requirements.
- All hinges have been tested to meet a minimum life of 30,000 cycles.
- Operating temperature: 0 – 212°F
- Smooth feel and consistent torque is maintained over the life of the hinge (+/- 15% of nominal).
- Hinges have negligible spring back with no backlash.
- All our hinges are RoHS compliant.

Lead	Under 100 ppm
Cadmium	Under 5 ppm
Mercury	Under 5 ppm
Hexavalent Chromium	Under 5 ppm

HANAYA



1000-0002-HNG R

Torque Range

- LOW: 10.0 – 16.0 in.lb ± 15%
- MED: 14.0 – 20.0 in.lb ± 15%
- HIGH: 18.0 – 24.0 in.lb ± 15%

Overall Dimensions

- 2.08" L X 1.00" W X 0.28" H

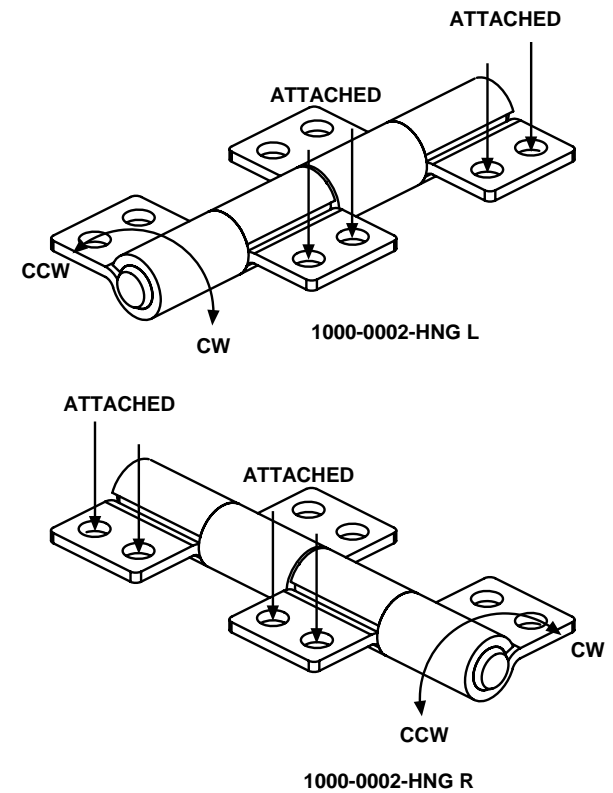
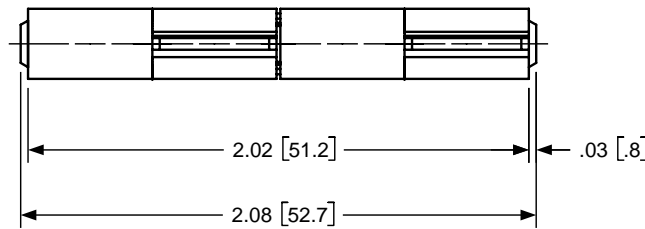
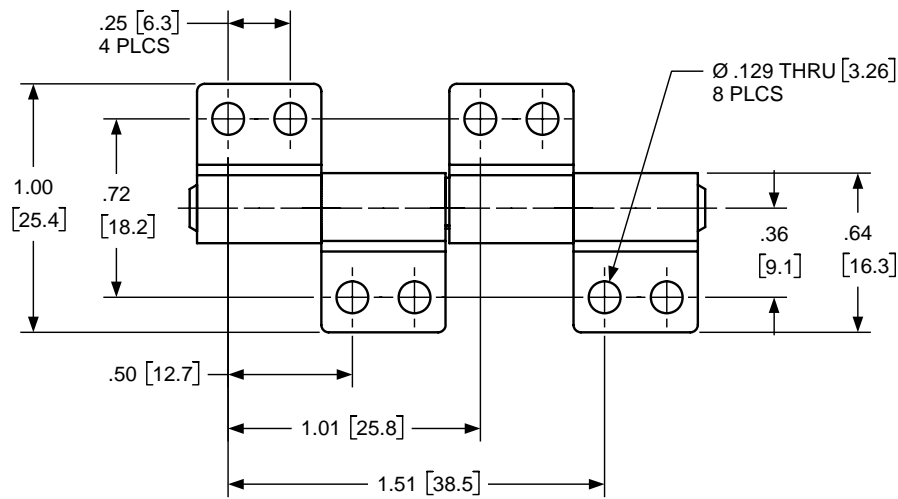
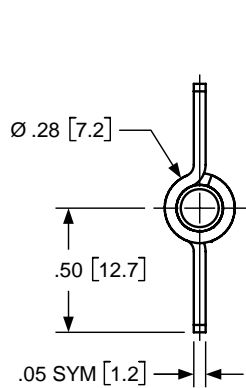
Material

- Steel Band, Shaft
- Copper Base Grease

Friction Hinge Features

- Constant torque friction hinge.
- Available in balance or unbalance torque configurations.
- Hinge rotates 360° and provides infinite number of holding positions.
- All bands are nickel plated for extra corrosion resistance.
- Different finishes available for cosmetics requirements.
- All hinges have been tested to meet a minimum life of 30,000 cycles.
- Operating temperature: 0 – 212°F
- Smooth feel and consistent torque is maintained over the life of the hinge (+/- 15% of nominal).
- Hinges have negligible spring back with no backlash.
- All our hinges are RoHS compliant.

Lead	Under 100 ppm
Cadmium	Under 5 ppm
Mercury	Under 5 ppm
Hexavalent Chromium	Under 5 ppm



TORQUE SPECIFICATIONS		
PART NUMBER	CW	CCW
1000-0002-HNG L		
1000-0002-HNG R		

HANAYA		TITLE		
<small>ALL INFORMATION ON THIS PRINT ARE PROPRIETARY TO HANAYA, AND SHALL NOT BE USED IN WHOLE OR IN PART WITHOUT HANAYA'S CONSENT.</small>		INTERFACE DRAWING		
		ENGLISH [METRIC]		MATERIAL
SUITABLE MOUNTING SCREWS		TOLERANCES		
FRACTIONAL	4-40 UNC	METRIC	ENGLISH	STEEL BAND & SHAFT
		.X ±.3 MM	.XX ±.015 IN	SIZE DWG NO B 1000-0002-HNG L & R
		.XX ±.13 MM	.XXX ±.005 IN	
METRIC	M3 X 0.5	.XXX ±.005 MM	.XXXX ±.002 IN	
		ANGLE ± 1°		

HANAYA



1000-0011-HNG L

Torque Range

- LOW: 1.5 – 2.0 in.lb ± 25%
- MED: 3.0 – 4.0 in.lb ± 15%
- HIGH: 4.0 – 6.0 in.lb ± 15%

Overall Dimensions

- 0.64" L X 1.75" W X 0.28" H

Material

- Steel Band, Shaft
- Copper Base Grease

Friction Hinge Features

- Constant torque friction hinge.
- Available in balance or unbalance torque configurations.
- Hinge rotates 360° and provides infinite number of holding positions.
- All bands are nickel plated for extra corrosion resistance.
- Different finishes available for cosmetics requirements.
- All hinges have been tested to meet a minimum life of 30,000 cycles.
- Operating temperature: 0 – 212°F
- Smooth feel and consistent torque is maintained over the life of the hinge (+/- 15% of nominal).
- Hinges have negligible spring back with no backlash.
- All our hinges are RoHS compliant.

Lead	Under 100 ppm
Cadmium	Under 5 ppm
Mercury	Under 5 ppm
Hexavalent Chromium	Under 5 ppm



1000-0011-HNG R

Torque Range

- LOW: 1.5 – 2.0 in.lb ± 25%
- MED: 3.0 – 4.0 in.lb ± 15%
- HIGH: 4.0 – 6.0 in.lb ± 15%

Overall Dimensions

- 0.64" L X 1.75" W X 0.28" H

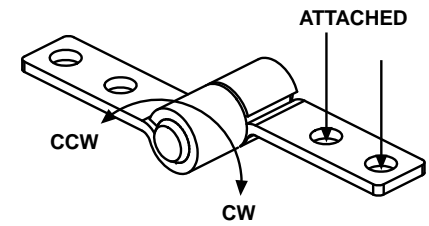
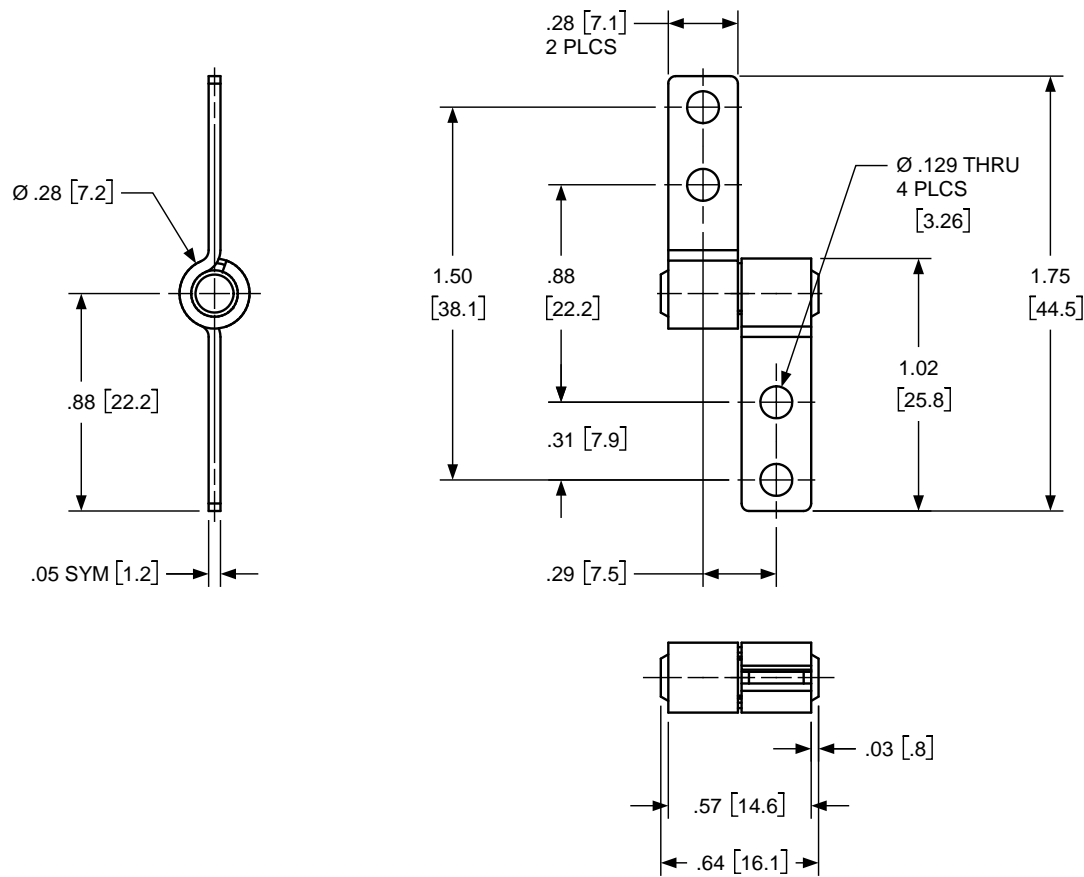
Material

- Steel Band, Shaft
- Copper Base Grease

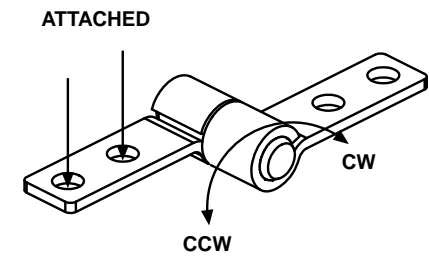
Friction Hinge Features

- Constant torque friction hinge.
- Available in balance or unbalance torque configurations.
- Hinge rotates 360° and provides infinite number of holding positions.
- All bands are nickel plated for extra corrosion resistance.
- Different finishes available for cosmetics requirements.
- All hinges have been tested to meet a minimum life of 30,000 cycles.
- Operating temperature: 0 – 212°F
- Smooth feel and consistent torque is maintained over the life of the hinge (+/- 15% of nominal).
- Hinges have negligible spring back with no backlash.
- All our hinges are RoHS compliant.

Lead	Under 100 ppm
Cadmium	Under 5 ppm
Mercury	Under 5 ppm
Hexavalent Chromium	Under 5 ppm



1000-0011-HNG L

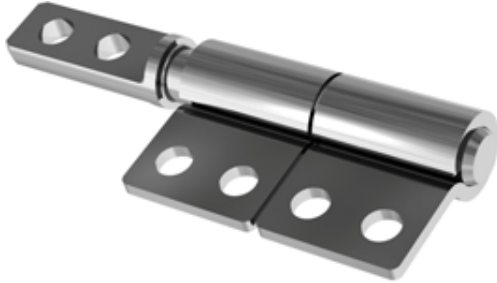


1000-0011-HNG R

TORQUE SPECIFICATIONS		
PART NUMBER	CW	CCW
1000-0011-HNG L		
1000-0011-HNG R		

HANAYA		TITLE			
<small>ALL INFORMATION ON THIS PRINT ARE PROPRIETARY TO HANAYA, AND SHALL NOT BE USED IN WHOLE OR IN PART WITHOUT HANAYA'S CONSENT.</small>		INTERFACE DRAWING			
		ENGLISH [METRIC] TOLERANCES		MATERIAL STEEL BAND & SHAFT	
SUITABLE MOUNTING SCREWS		METRIC .X ±.3 MM .XX ±.13 MM .XXX ±.005 MM	ENGLISH .XX ±.015 IN .XXX ±.005 IN .XXXX ±.002 IN	SIZE B	DWG NO. 1000-0011-HNG L & R
FRACTIONAL 4-40 UNC	METRIC M3 X 0.5	ANGLE ± 1°			

HANAYA



1000-0201-HNG L

Torque Range

- LOW: 10.0 – 16.0 in.lb ± 15%
- MED: 14.0 – 20.0 in.lb ± 15%
- HIGH: 18.0 – 24.0 in.lb ± 15%

Overall Dimensions

- 0.64" L X 1.83" W X 0.28" H

Material

- Steel Band, Shaft
- Copper Base Grease

Friction Hinge Features

- Constant torque friction hinge.
- Available in balance or unbalance torque configurations.
- Hinge rotates 360° and provides infinite number of holding positions.
- All bands are nickel plated for extra corrosion resistance.
- Different finishes available for cosmetics requirements.
- All hinges have been tested to meet a minimum life of 30,000 cycles.
- Operating temperature: 0 – 212°F
- Smooth feel and consistent torque is maintained over the life of the hinge (+/- 15% of nominal).
- Hinges have negligible spring back with no backlash.
- All our hinges are RoHS compliant.

Lead	Under 100 ppm
Cadmium	Under 5 ppm
Mercury	Under 5 ppm
Hexavalent Chromium	Under 5 ppm

HANAYA



1000-0201-HNG R

Torque Range

- LOW: 10.0 – 16.0 in.lb ± 15%
- MED: 14.0 – 20.0 in.lb ± 15%
- HIGH: 18.0 – 24.0 in.lb ± 15%

Overall Dimensions

- 0.64" L X 1.83" W X 0.28" H

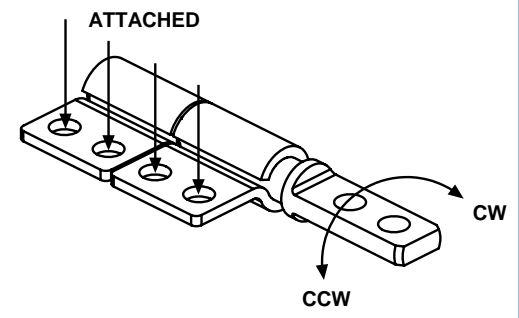
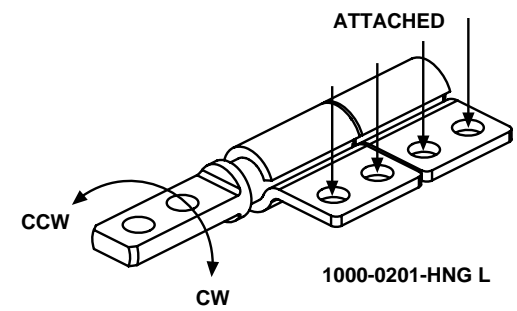
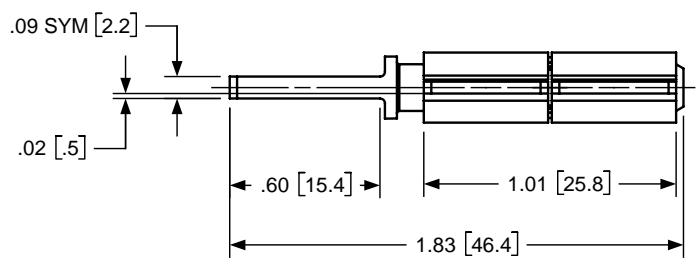
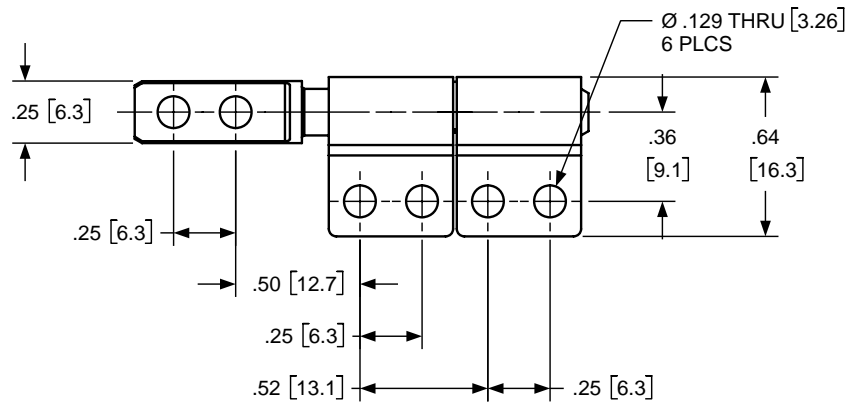
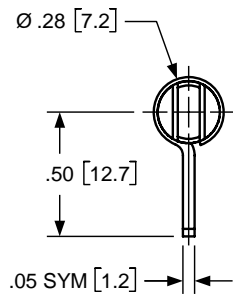
Material

- Steel Band, Shaft
- Copper Base Grease

Friction Hinge Features

- Constant torque friction hinge.
- Available in balance or unbalance torque configurations.
- Hinge rotates 360° and provides infinite number of holding positions.
- All bands are nickel plated for extra corrosion resistance.
- Different finishes available for cosmetics requirements.
- All hinges have been tested to meet a minimum life of 30,000 cycles.
- Operating temperature: 0 – 212°F
- Smooth feel and consistent torque is maintained over the life of the hinge (+/- 15% of nominal).
- Hinges have negligible spring back with no backlash.
- All our hinges are RoHS compliant.

Lead	Under 100 ppm
Cadmium	Under 5 ppm
Mercury	Under 5 ppm
Hexavalent Chromium	Under 5 ppm



TORQUE SPECIFICATIONS		
PART NUMBER	CW	CCW
1000-0201-HNG L		
1000-0201-HNG R		

HANAYA		TITLE		
<small>ALL INFORMATION ON THIS PRINT ARE PROPRIETARY TO HANAYA, AND SHALL NOT BE USED IN WHOLE OR IN PART WITHOUT HANAYA'S CONSENT.</small>		INTERFACE DRAWING		
		MATERIAL: STEEL BAND & SHAFT		
SUITABLE MOUNTING SCREWS		TOLERANCES		SIZE: B
FRACTIONAL	4-40 UNC	METRIC: .X ±.3 MM	ENGLISH: .XX ±.015 IN	DWG NO: 1000-0201-HNG L & R
		.XX ±.13 MM	.XXX ±.005 IN	
METRIC	M3 X 0.5	.XXX ±.005 MM	.XXXX ±.0002 IN	
ANGLE ± 1°				

HANAYA



1000-0401-HNG L

Torque Range

- LOW: 5.0 – 8.0 in.lb ± 15%
- MED: 7.0 – 10.0 in.lb ± 15%
- HIGH: 9.0 – 12.0 in.lb ± 15%

Overall Dimensions

- 1.38" L X 0.66" W X 0.31" H

Material

- Steel Band, Shaft
- Zinc Housing
- Copper Base Grease

Friction Hinge Features

- Constant torque friction hinge.
- Available in balance or unbalance torque configurations.
- Hinge rotates 360° and provides infinite number of holding positions.
- All bands are nickel plated for extra corrosion resistance.
- Different finishes available for cosmetics requirements.
- All hinges have been tested to meet a minimum life of 30,000 cycles.
- Operating temperature: 0 – 212°F
- Smooth feel and consistent torque is maintained over the life of the hinge (+/- 15% of nominal).
- Hinges have negligible spring back with no backlash.
- All our hinges are RoHS compliant.

Lead	Under 100 ppm
Cadmium	Under 5 ppm
Mercury	Under 5 ppm
Hexavalent Chromium	Under 5 ppm

HANAYA



1000-0401-HNG R

Torque Range

- LOW: 5.0 – 8.0 in.lb ± 15%
- MED: 7.0 – 10.0 in.lb ± 15%
- HIGH: 9.0 – 12.0 in.lb ± 15%

Overall Dimensions

- 1.38" L X 0.66" W X 0.31" H

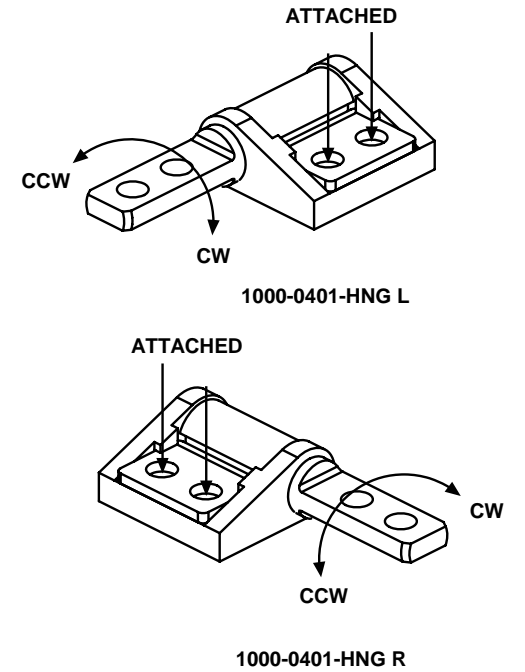
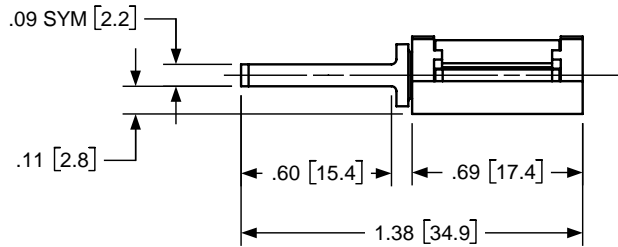
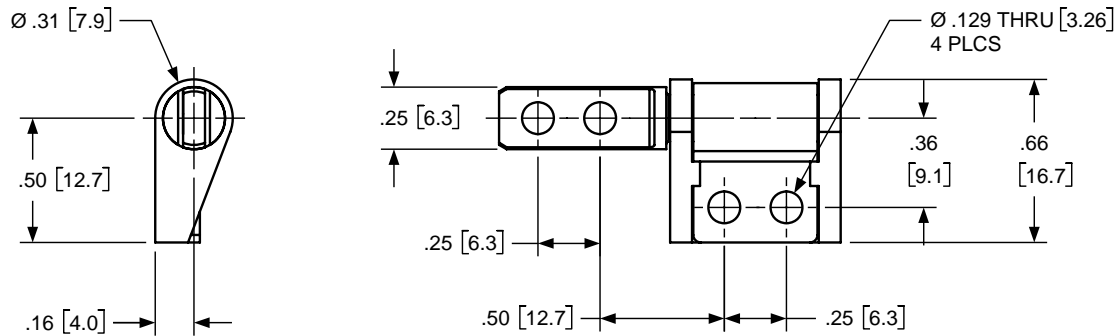
Material

- Steel Band, Shaft
- Zinc Housing
- Copper Base Grease

Friction Hinge Features

- Constant torque friction hinge.
- Available in balance or unbalance torque configurations.
- Hinge rotates 360° and provides infinite number of holding positions.
- All bands are nickel plated for extra corrosion resistance.
- Different finishes available for cosmetics requirements.
- All hinges have been tested to meet a minimum life of 30,000 cycles.
- Operating temperature: 0 – 212°F
- Smooth feel and consistent torque is maintained over the life of the hinge (+/- 15% of nominal).
- Hinges have negligible spring back with no backlash.
- All our hinges are RoHS compliant.

Lead	Under 100 ppm
Cadmium	Under 5 ppm
Mercury	Under 5 ppm
Hexavalent Chromium	Under 5 ppm



TORQUE SPECIFICATIONS		
PART NUMBER	CW	CCW
1000-0401-HNG L		
1000-0401-HNG R		

HANAYA		TITLE		
<small>ALL INFORMATION ON THIS PRINT ARE PROPRIETARY TO HANAYA, AND SHALL NOT BE USED IN WHOLE OR IN PART WITHOUT HANAYA'S CONSENT.</small>		ENGLISH [METRIC]		MATERIAL
		TOLERANCES		ZINC HOUSING STEEL BAND & SHAFT
SUITABLE MOUNTING SCREWS		METRIC	ENGLISH	SIZE
FRACTIONAL	4-40 UNC	.X ±.3 MM	.XX ±.015 IN	DWG NO 1000-0401-HNG L & R
METRIC	M3 X 0.5	.XX ±.13 MM	.XXX ±.005 IN	
		.XXX ±.005 MM	.XXXX ±.0002 IN	
		ANGLE ± 1°		

HANAYA



1000-0402-HNG L

Torque Range

- LOW: 5.0 – 8.0 in.lb ± 15%
- MED: 7.0 – 10.0 in.lb ± 15%
- HIGH: 9.0 – 12.0 in.lb ± 15%

Overall Dimensions

- 1.22" L X 1.00" W X 0.31" H

Material

- Steel Band, Shaft
- Zinc Housing
- Copper Base Grease

Friction Hinge Features

- Constant torque friction hinge.
- Available in balance or unbalance torque configurations.
- Hinge rotates 360° and provides infinite number of holding positions.
- All bands are nickel plated for extra corrosion resistance.
- Different finishes available for cosmetics requirements.
- All hinges have been tested to meet a minimum life of 30,000 cycles.
- Operating temperature: 0 – 212°F
- Smooth feel and consistent torque is maintained over the life of the hinge (+/- 15% of nominal).
- Hinges have negligible spring back with no backlash.
- All our hinges are RoHS compliant.

Lead	Under 100 ppm
Cadmium	Under 5 ppm
Mercury	Under 5 ppm
Hexavalent Chromium	Under 5 ppm



1000-0402-HNG R

Torque Range

- LOW: 5.0 – 8.0 in.lb ± 15%
- MED: 7.0 – 10.0 in.lb ± 15%
- HIGH: 9.0 – 12.0 in.lb ± 15%

Overall Dimensions

- 1.22" L X 1.00" W X 0.31" H

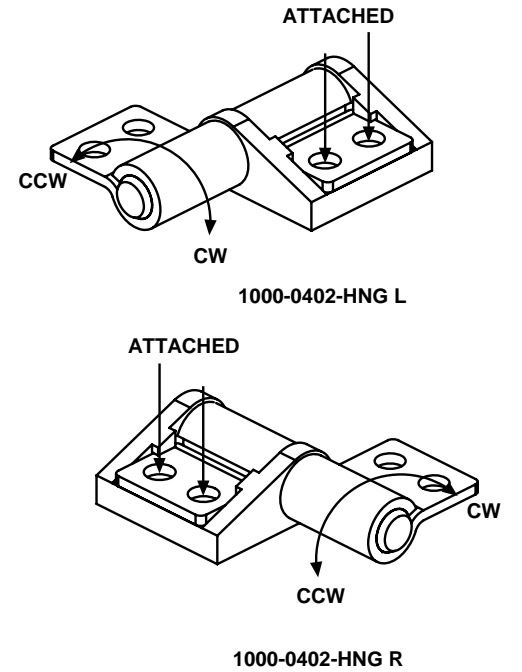
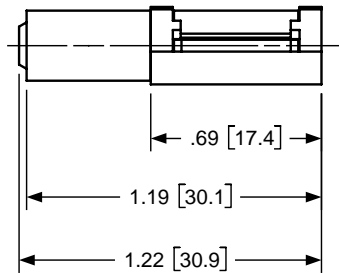
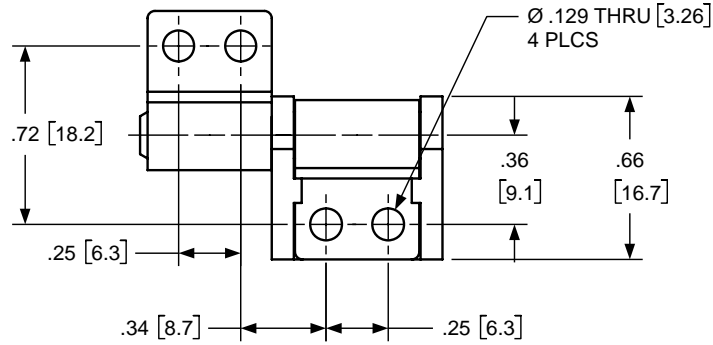
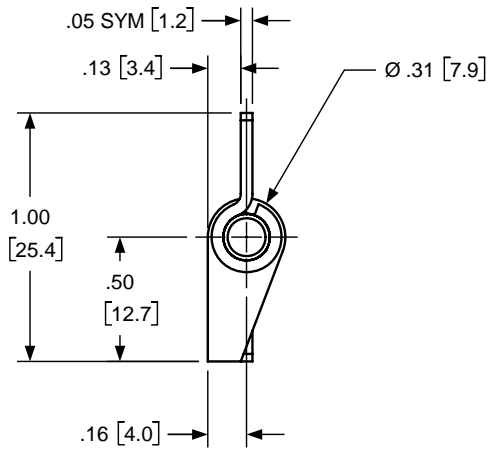
Material

- Steel Band, Shaft
- Zinc Housing
- Copper Base Grease

Friction Hinge Features

- Constant torque friction hinge.
- Available in balance or unbalance torque configurations.
- Hinge rotates 360° and provides infinite number of holding positions.
- All bands are nickel plated for extra corrosion resistance.
- Different finishes available for cosmetics requirements.
- All hinges have been tested to meet a minimum life of 30,000 cycles.
- Operating temperature: 0 – 212°F
- Smooth feel and consistent torque is maintained over the life of the hinge (+/- 15% of nominal).
- Hinges have negligible spring back with no backlash.
- All our hinges are RoHS compliant.

Lead	Under 100 ppm
Cadmium	Under 5 ppm
Mercury	Under 5 ppm
Hexavalent Chromium	Under 5 ppm



TORQUE SPECIFICATIONS		
PART NUMBER	CW	CCW
1000-0402-HNG L		
1000-0402-HNG R		

HANAYA		TITLE		
INTERFACE DRAWING		MATERIAL		
ALL INFORMATION ON THIS PRINT ARE PROPRIETARY TO HANAYA, AND SHALL NOT BE USED IN WHOLE OR IN PART WITHOUT HANAYA'S CONSENT.		ENGLISH [METRIC]		ZINC HOUSING
SUITABLE MOUNTING SCREWS		TOLERANCES		STEEL BAND & SHAFT
FRACTIONAL	4-40 UNC	METRIC	ENGLISH	SIZE
METRIC	M3 X 0.5	.X ±.3 MM	.XX ±.015 IN	DWG NO
		.XX ±.13 MM	.XXX ±.005 IN	1000-0402-HNG L & R
		.XXX ±.005 MM	.XXXX ±.0002 IN	
		ANGLE ± 1°		



1000-0501-HNG

Torque Range

- LOW: 4.0 in.lb \pm 15%
- MED: 6.0 in.lb \pm 15%
- HIGH: 8.0 in.lb \pm 15%

Overall Dimensions

- 1.75" L X 0.28" W X 0.28" H

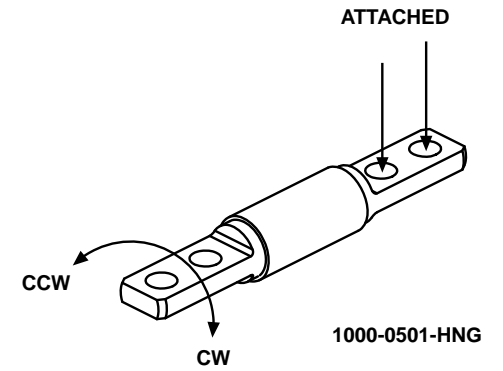
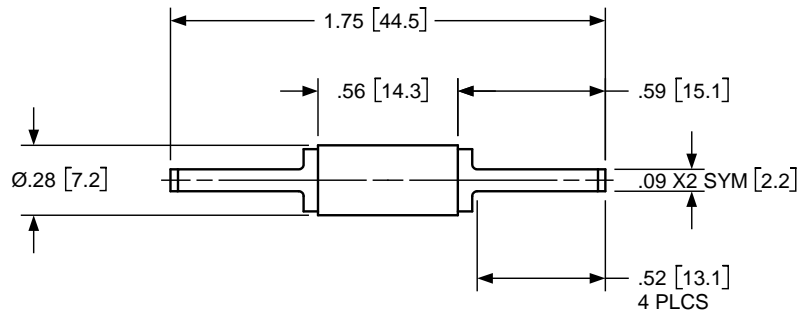
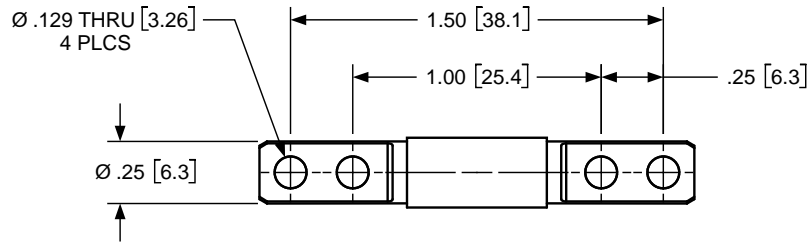
Material

- Steel Band, Shaft
- Copper Base Grease

Friction Hinge Features

- Constant torque friction hinge.
- Available in balance torque configuration.
- Hinge rotates 360° and provides infinite number of holding positions.
- All bands are nickel plated for extra corrosion resistance.
- Different finishes available for cosmetics requirements.
- All hinges have been tested to meet a minimum life of 30,000 cycles.
- Operating temperature: 0 – 212°F
- Smooth feel and consistent torque is maintained over the life of the hinge (+/- 15% of nominal).
- Hinges have negligible spring back with no backlash.
- All our hinges are RoHS compliant.

Lead	Under 100 ppm
Cadmium	Under 5 ppm
Mercury	Under 5 ppm
Hexavalent Chromium	Under 5 ppm



TORQUE SPECIFICATIONS		
PART NUMBER	CW	CCW
1000-0501-HNG		

HANAYA		TITLE		
<small>ALL INFORMATION ON THIS PRINT ARE PROPRIETARY TO HANAYA, AND SHALL NOT BE USED IN WHOLE OR IN PART WITHOUT HANAYA'S CONSENT.</small>		ENGLISH / METRIC		MATERIAL
		TOLERANCES		STEEL BAND & SHAFT
SUITABLE MOUNTING SCREWS		METRIC	ENGLISH	SIZE DWG NO
FRACTIONAL	4-40 UNC	.X ±.3 MM .XX ±.13 MM .XXX ±.005 MM	.XX ±.015 IN .XXX ±.005 IN .XXXX ±.0002 IN	B 1000-0501-HNG
METRIC	M3 X 0.5	ANGLE ± 1°		

HANAYA



1000-0601-HNG

Torque Range

- Damping Torque Range: 0.5 – 1.0 in.lb ± 30%
- Customizable Damping Torque

Overall Dimensions

- 1.75" L X 0.31" W X 0.31" H

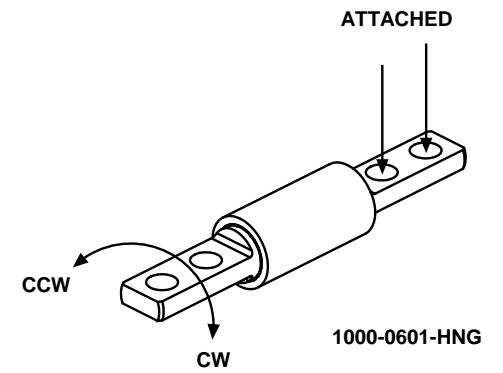
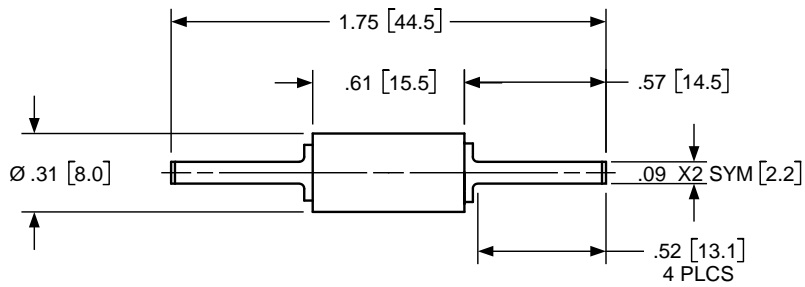
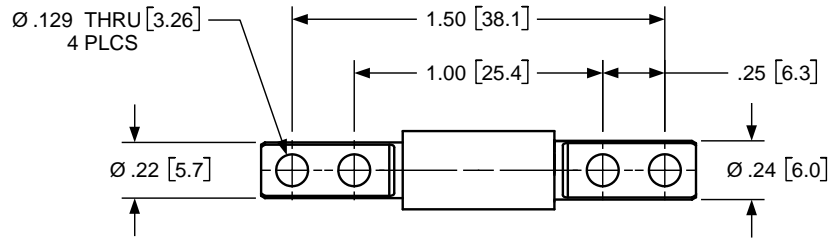
Material

- Aluminum Shaft, Housing
- Damping Grease

Friction Hinge Features

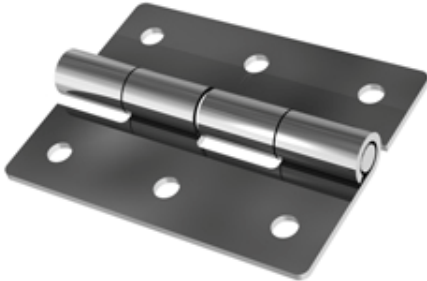
- Constant torque friction hinge.
- Available in balance torque configuration.
- Hinge rotates 360° and provides infinite number of holding positions.
- Different finishes available for cosmetics requirements.
- All hinges have been tested to meet a minimum life of 30,000 cycles.
- Operating temperature: 60 – 212°F
- Smooth feel and consistent torque is maintained over the life of the hinge (+/- 15% of nominal).
- Hinges have negligible spring back with no backlash.
- All our hinges are RoHS compliant.

Lead	Under 100 ppm
Cadmium	Under 5 ppm
Mercury	Under 5 ppm
Hexavalent Chromium	Under 5 ppm



HANAYA		TITLE INTERFACE DRAWING			
<small>ALL INFORMATION ON THIS PRINT ARE PROPRIETARY TO HANAYA, AND SHALL NOT BE USED IN WHOLE OR IN PART WITHOUT HANAYA'S CONSENT.</small>		ENGLISH / METRIC TOLERANCES		MATERIAL ALUMINIUM SHAFT & HOUSING	
		METRIC	ENGLISH	SIZE B	DWG NO 1000-0601-HNG
SUITABLE MOUNTING SCREWS		METRIC	ENGLISH		
FRACTIONAL	4-40 UNC	.X ±.3 MM .XX ±.13 MM .XXX ±.005 MM	.XX ±.015 IN .XXX ±.005 IN .XXXX ±.0002 IN		
METRIC	M3 X 0.5	ANGLE ± 1°			

HANAYA



1000-0701-HNG

Torque Range

- LOW: 10.0 – 16.0 in.lb ± 15%
- MED: 14.0 – 20.0 in.lb ± 15%
- HIGH: 18.0 – 24.0 in.lb ± 15%

Overall Dimensions

- 1.75" L X 0.28" W X 0.28" H

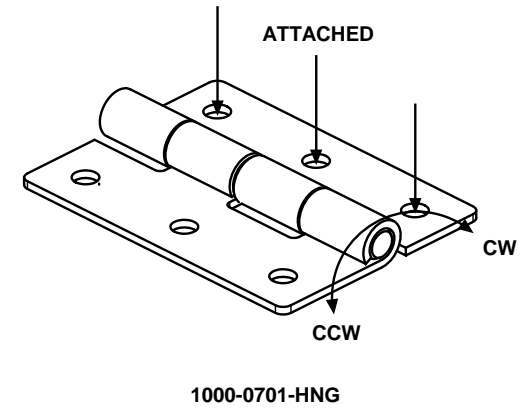
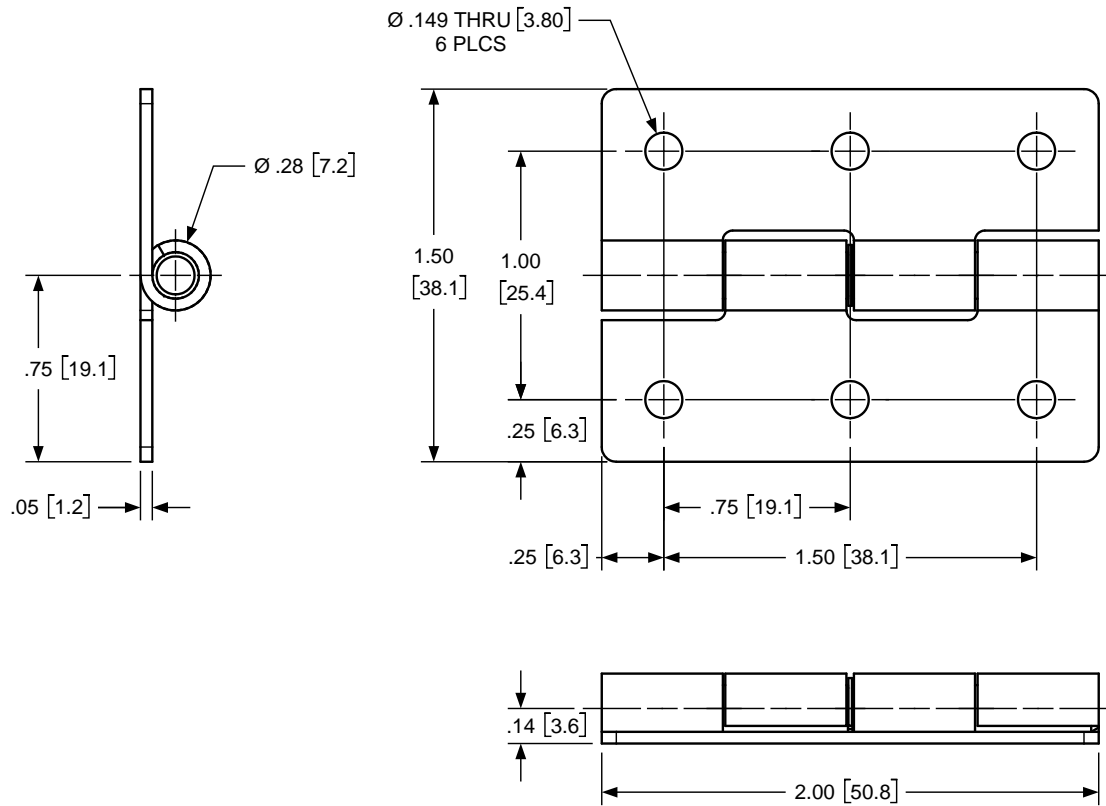
Material

- Steel Band, Shaft
- Copper Base Grease

Friction Hinge Features

- Constant torque friction hinge.
- Available in balance torque configuration.
- Hinge rotates 360° and provides infinite number of holding positions.
- All bands are nickel plated for extra corrosion resistance.
- Different finishes available for cosmetics requirements.
- All hinges have been tested to meet a minimum life of 30,000 cycles.
- Operating temperature: 0 – 212°F
- Smooth feel and consistent torque is maintained over the life of the hinge (+/- 15% of nominal).
- Hinges have negligible spring back with no backlash.
- All our hinges are RoHS compliant.

Lead	Under 100 ppm
Cadmium	Under 5 ppm
Mercury	Under 5 ppm
Hexavalent Chromium	Under 5 ppm



TORQUE SPECIFICATIONS		
PART NUMBER	CW	CCW
1000-0701-HNG		

HANAYA		TITLE		
<small>ALL INFORMATION ON THIS PRINT ARE PROPRIETARY TO HANAYA, AND SHALL NOT BE USED IN WHOLE OR IN PART WITHOUT HANAYA'S CONSENT.</small>		ENGLISH [METRIC]		MATERIAL
		TOLERANCES		STEEL BAND & SHAFT
SUITABLE MOUNTING SCREWS		METRIC	ENGLISH	SIZE
FRACTIONAL	6-32 UNC	.X ±.3 MM	.XX ±.015 IN	DWG NO
METRIC	M3.5 X 0.6	.XX ±.13 MM	.XXX ±.005 IN	1000-0701-HNG
		.XXX ±.005 MM	.XXXX ±.0002 IN	
		ANGLE ± 1°		

HANAYA



2000-0001-HNG L

Torque Range

- LOW: 7.0 – 10.0 in.lb ± 15%
- MED: 9.0 – 13.0 in.lb ± 15%
- HIGH: 11.0 – 16.0 in.lb ± 15%

Overall Dimensions

- 1.37" L X 1.25" W X .34" H

Material

- Steel Band, Shaft
- Copper Base Grease

Friction Hinge Features

- Constant torque friction hinge.
- Available in balance or unbalance torque configurations.
- Hinge rotates 360° and provides infinite number of holding positions.
- All bands are nickel plated for extra corrosion resistance.
- Different finishes available for cosmetics requirements.
- All hinges have been tested to meet a minimum life of 30,000 cycles.
- Operating temperature: 0 – 212°F
- Smooth feel and consistent torque is maintained over the life of the hinge (+/- 15% of nominal).
- Hinges have negligible spring back with no backlash.
- All our hinges are RoHS compliant.

Lead	Under 100 ppm
Cadmium	Under 5 ppm
Mercury	Under 5 ppm
Hexavalent Chromium	Under 5 ppm



2000-0001-HNG R

Torque Range

- LOW: 7.0 – 10.0 in.lb ± 15%
- MED: 9.0 – 13.0 in.lb ± 15%
- HIGH: 11.0 – 16.0 in.lb ± 15%

Overall Dimensions

- 1.37" L X 1.25" W X .34" H

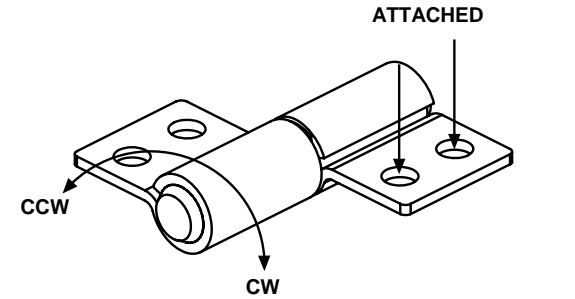
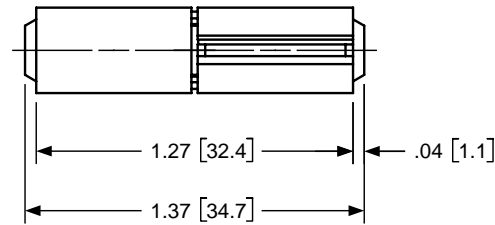
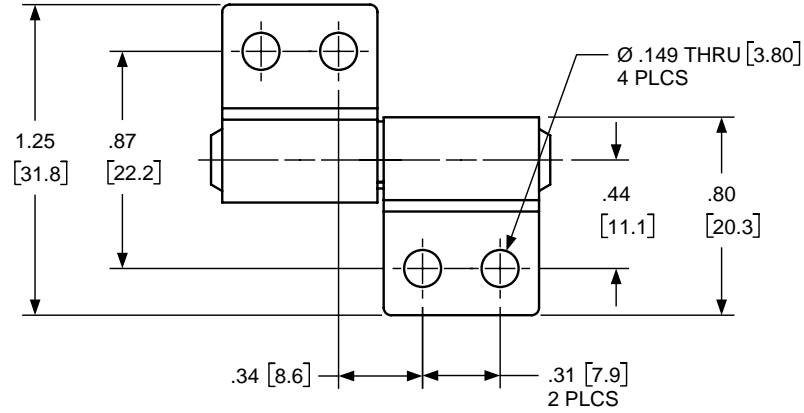
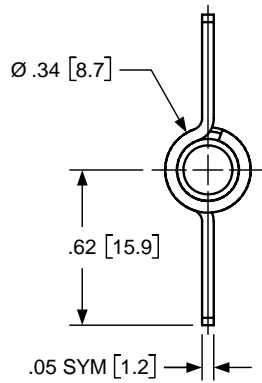
Material

- Steel Band, Shaft
- Copper Base Grease

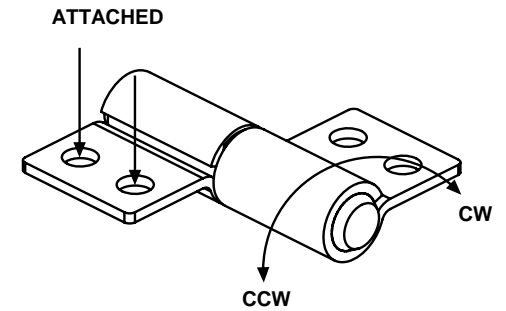
Friction Hinge Features

- Constant torque friction hinge.
- Available in balance or unbalance torque configurations.
- Hinge rotates 360° and provides infinite number of holding positions.
- All bands are nickel plated for extra corrosion resistance.
- Different finishes available for cosmetics requirements.
- All hinges have been tested to meet a minimum life of 30,000 cycles.
- Operating temperature: 0 – 212°F
- Smooth feel and consistent torque is maintained over the life of the hinge (+/- 15% of nominal).
- Hinges have negligible spring back with no backlash.
- All our hinges are RoHS compliant.

Lead	Under 100 ppm
Cadmium	Under 5 ppm
Mercury	Under 5 ppm
Hexavalent Chromium	Under 5 ppm



2000-0001-HNG L



2000-0001-HNG R

TORQUE SPECIFICATIONS		
PART NUMBER	CW	CCW
2000-0001-HNG L		
2000-0001-HNG R		

HANAYA		TITLE		
<small>ALL INFORMATION ON THIS PRINT ARE PROPRIETARY TO HANAYA, AND SHALL NOT BE USED IN WHOLE OR IN PART WITHOUT HANAYA'S CONSENT.</small>		ENGLISH [METRIC]		MATERIAL
		TOLERANCES		STEEL BAND & SHAFT
SUITABLE MOUNTING SCREWS		METRIC	ENGLISH	SIZE
FRACTIONAL	6-32 UNC	.X ±.3 MM	.XX ±.015 IN	DWG NO.
METRIC	M3.5 X 0.6	.XX ±.13 MM	.XXX ±.005 IN	
		.XXX ±.005 MM	.XXXX ±.0002 IN	2000-0001-HNG L & R
		ANGLE ± 1°		



2000-0002-HNG L

Torque Range

- LOW: 14.0 – 20.0 in.lb ± 15%
- MED: 18.0 – 26.0 in.lb ± 15%
- HIGH: 22.0 – 32.0 in.lb ± 15%

Overall Dimensions

- 2.62" L X 1.25" W X .34" H

Material

- Steel Band, Shaft
- Copper Base Grease

Friction Hinge Features

- Constant torque friction hinge.
- Available in balance or unbalance torque configurations.
- Hinge rotates 360° and provides infinite number of holding positions.
- All bands are nickel plated for extra corrosion resistance.
- Different finishes available for cosmetics requirements.
- All hinges have been tested to meet a minimum life of 30,000 cycles.
- Operating temperature: 0 – 212°F
- Smooth feel and consistent torque is maintained over the life of the hinge (+/- 15% of nominal).
- Hinges have negligible spring back with no backlash.
- All our hinges are RoHS compliant.

Lead	Under 100 ppm
Cadmium	Under 5 ppm
Mercury	Under 5 ppm
Hexavalent Chromium	Under 5 ppm



2000-0002-HNG R

Torque Range

- LOW: 14.0 – 20.0 in.lb ± 15%
- MED: 18.0 – 26.0 in.lb ± 15%
- HIGH: 22.0 – 32.0 in.lb ± 15%

Overall Dimensions

- 2.62" L X 1.25" W X .34" H

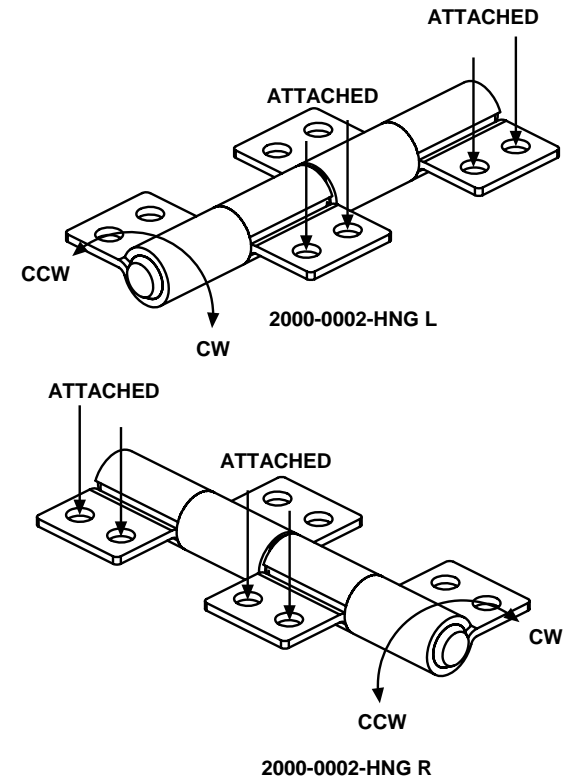
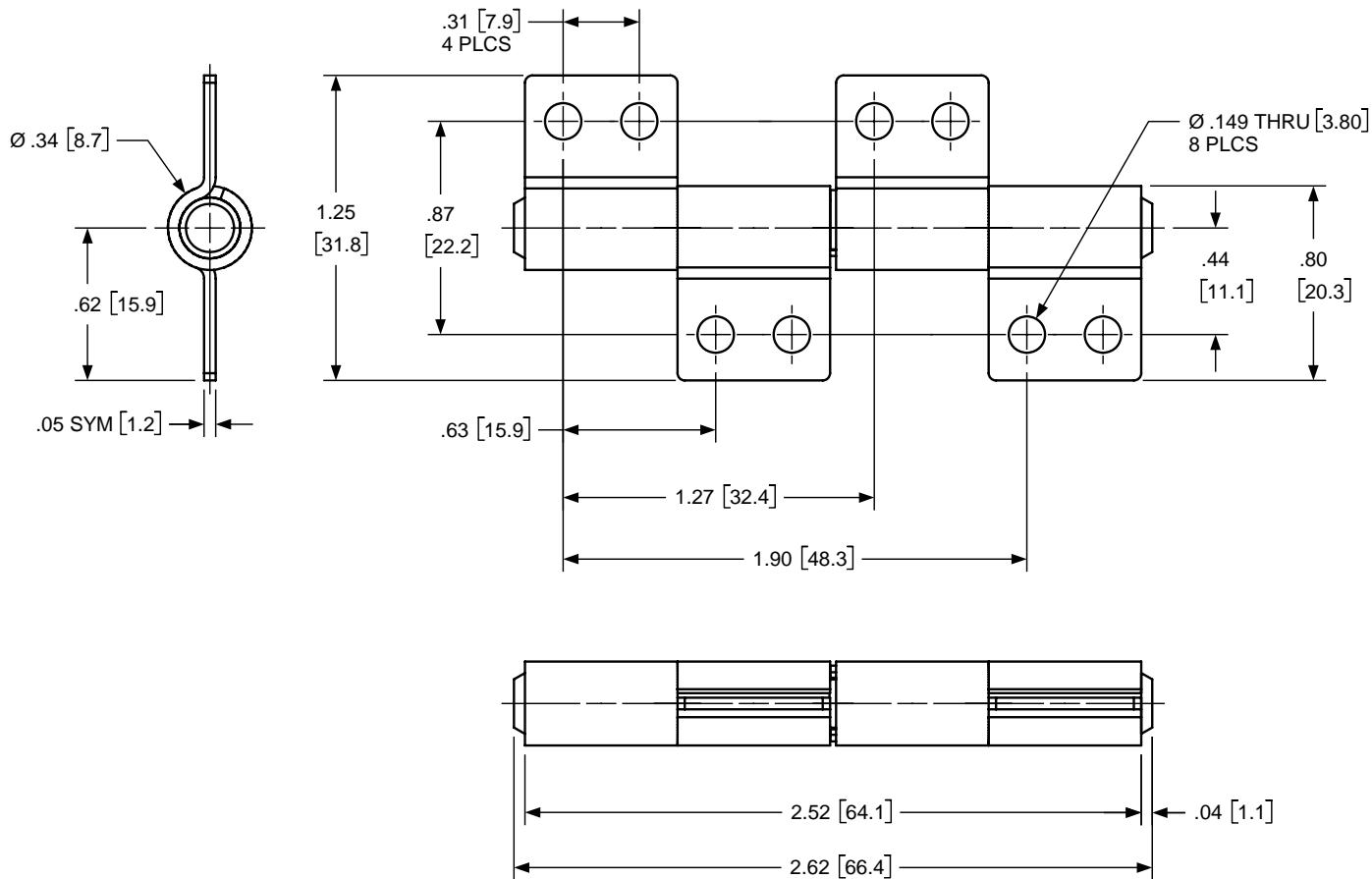
Material

- Steel Band, Shaft
- Copper Base Grease

Friction Hinge Features

- Constant torque friction hinge.
- Available in balance or unbalance torque configurations.
- Hinge rotates 360° and provides infinite number of holding positions.
- All bands are nickel plated for extra corrosion resistance.
- Different finishes available for cosmetics requirements.
- All hinges have been tested to meet a minimum life of 30,000 cycles.
- Operating temperature: 0 – 212°F
- Smooth feel and consistent torque is maintained over the life of the hinge (+/- 15% of nominal).
- Hinges have negligible spring back with no backlash.
- All our hinges are RoHS compliant.

Lead	Under 100 ppm
Cadmium	Under 5 ppm
Mercury	Under 5 ppm
Hexavalent Chromium	Under 5 ppm



TORQUE SPECIFICATIONS		
PART NUMBER	CW	CCW
2000-0002-HNG L		
2000-0002-HNG R		

HANAYA		TITLE		
<small>ALL INFORMATION ON THIS PRINT ARE PROPRIETARY TO HANAYA, AND SHALL NOT BE USED IN WHOLE OR IN PART WITHOUT HANAYA'S CONSENT.</small>		INTERFACE DRAWING		
		ENGLISH [METRIC]		MATERIAL
SUITABLE MOUNTING SCREWS		TOLERANCES		STEEL BAND & SHAFT
FRACTIONAL	6-32 UNC	METRIC	ENGLISH	SIZE
		.X \pm .3 MM	.XX \pm .015 IN	DWG NO.
		.XX \pm .13 MM	.XXX \pm .005 IN	
METRIC	M3.5 X 0.6	.XXX \pm .005 MM	.XXXX \pm .002 IN	2000-0002-HNG L & R
		ANGLE \pm 1°		

HANAYA



2000-0011-HNG L

Torque Range

- LOW: 3.0 – 4.0 in.lb ± 15%
- MED: 4.0 – 6.0 in.lb ± 15%
- HIGH: 5.0 – 8.0 in.lb ± 15%

Overall Dimensions

- 0.74" L X 2.00" W X .34" H

Material

- Steel Band, Shaft
- Copper Base Grease

Friction Hinge Features

- Constant torque friction hinge.
- Available in balance or unbalance torque configurations.
- Hinge rotates 360° and provides infinite number of holding positions.
- All bands are nickel plated for extra corrosion resistance.
- Different finishes available for cosmetics requirements.
- All hinges have been tested to meet a minimum life of 30,000 cycles.
- Operating temperature: 0 – 212°F
- Smooth feel and consistent torque is maintained over the life of the hinge (+/- 15% of nominal).
- Hinges have negligible spring back with no backlash.
- All our hinges are RoHS compliant.

Lead	Under 100 ppm
Cadmium	Under 5 ppm
Mercury	Under 5 ppm
Hexavalent Chromium	Under 5 ppm

HANAYA



2000-0011-HNG R

Torque Range

- LOW: 3.0 – 4.0 in.lb ± 15%
- MED: 4.0 – 6.0 in.lb ± 15%
- HIGH: 5.0 – 8.0 in.lb ± 15%

Overall Dimensions

- 0.74" L X 2.00" W X .34" H

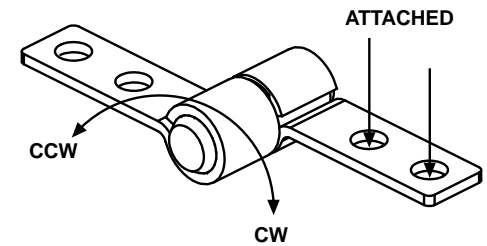
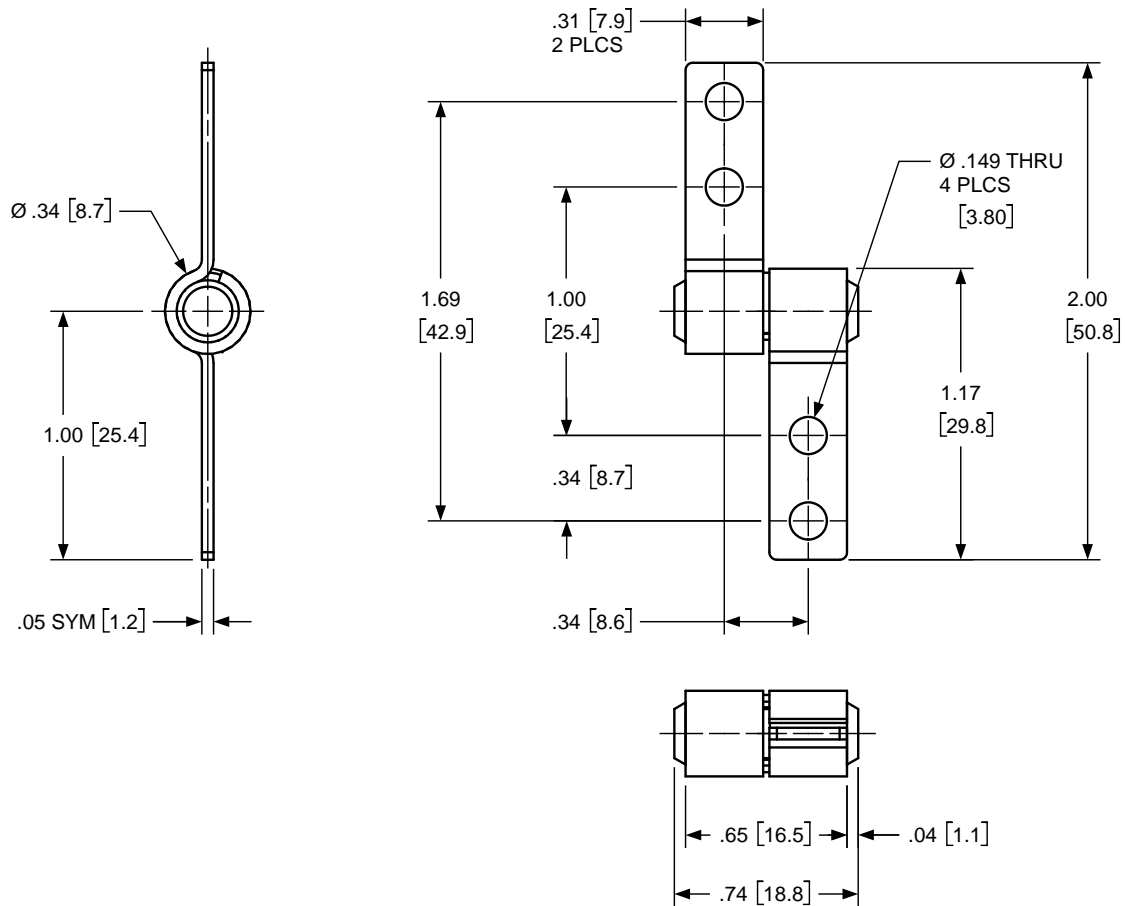
Material

- Steel Band, Shaft
- Copper Base Grease

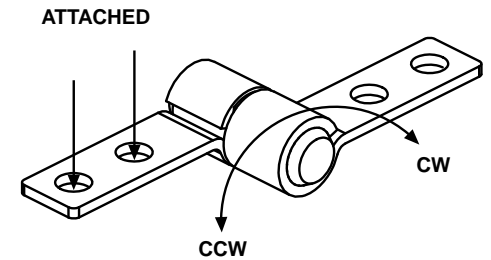
Friction Hinge Features

- Constant torque friction hinge.
- Available in balance or unbalance torque configurations.
- Hinge rotates 360° and provides infinite number of holding positions.
- All bands are nickel plated for extra corrosion resistance.
- Different finishes available for cosmetics requirements.
- All hinges have been tested to meet a minimum life of 30,000 cycles.
- Operating temperature: 0 – 212°F
- Smooth feel and consistent torque is maintained over the life of the hinge (+/- 15% of nominal).
- Hinges have negligible spring back with no backlash.
- All our hinges are RoHS compliant.

Lead	Under 100 ppm
Cadmium	Under 5 ppm
Mercury	Under 5 ppm
Hexavalent Chromium	Under 5 ppm



2000-0011-HNG L

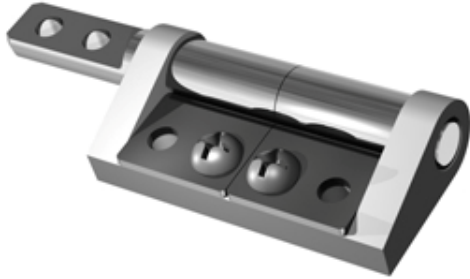


2000-0011-HNG R

TORQUE SPECIFICATIONS		
PART NUMBER	CW	CCW
2000-0011-HNG L		
2000-0011-HNG R		

HANAYA		TITLE		
<small>ALL INFORMATION ON THIS PRINT ARE PROPRIETARY TO HANAYA, AND SHALL NOT BE USED IN WHOLE OR IN PART WITHOUT HANAYA'S CONSENT.</small>		INTERFACE DRAWING		
		ENGLISH [METRIC] TOLERANCES		MATERIAL STEEL BAND & SHAFT
SUITABLE MOUNTING SCREWS		METRIC .X ±.3 MM .XX ±.13 MM .XXX ±.005 MM	ENGLISH .XX ±.015 IN .XXX ±.005 IN .XXXX ±.0002 IN	SIZE B
FRACTIONAL 6-32 UNC	METRIC M3.5 X 0.6	DWG NO. 2000-0011-HNG L & R		
ANGLE ± 1°				

HANAYA



2000-0401-HNG L

Torque Range

- LOW: 14.0 – 20.0 in.lb ± 15%
- MED: 18.0 – 26.0 in.lb ± 15%
- HIGH: 22.0 – 32.0 in.lb ± 15%

Overall Dimensions

- 2.50" L X 0.83" W X 0.41" H

Material

- Steel Band, Shaft
- Zinc Housing
- Copper Base Grease

Friction Hinge Features

- Constant torque friction hinge.
- Available in balance or unbalance torque configurations.
- Hinge rotates 360° and provides infinite number of holding positions.
- All bands are nickel plated for extra corrosion resistance.
- Different finishes available for cosmetics requirements.
- All hinges have been tested to meet a minimum life of 30,000 cycles.
- Operating temperature: 0 – 212°F
- Smooth feel and consistent torque is maintained over the life of the hinge (+/- 15% of nominal).
- Hinges have negligible spring back with no backlash.
- All our hinges are RoHS compliant.

Lead	Under 100 ppm
Cadmium	Under 5 ppm
Mercury	Under 5 ppm
Hexavalent Chromium	Under 5 ppm

HANAYA



2000-0401-HNG R

Torque Range

- LOW: 14.0 – 20.0 in.lb ± 15%
- MED: 18.0 – 26.0 in.lb ± 15%
- HIGH: 22.0 – 32.0 in.lb ± 15%

Overall Dimensions

- 2.50" L X 0.83" W X 0.41" H

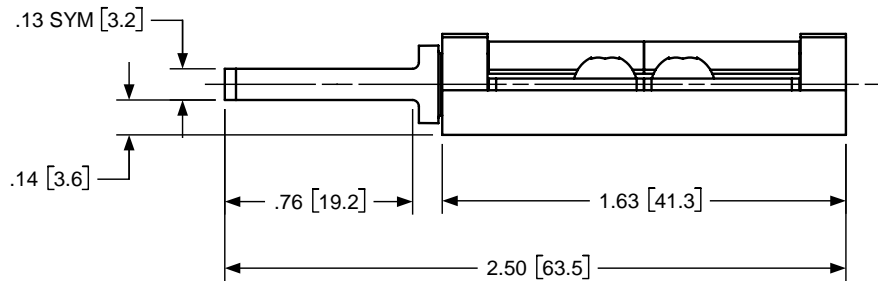
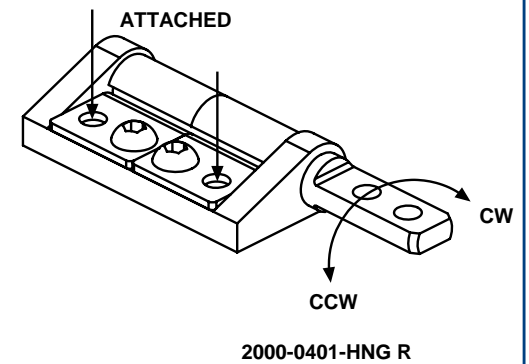
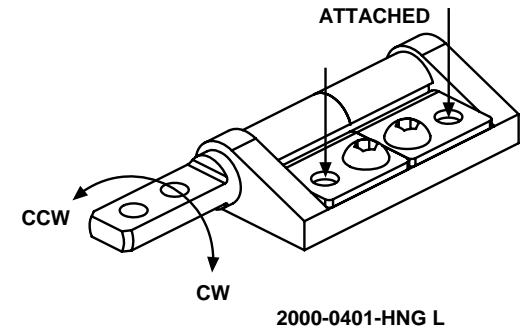
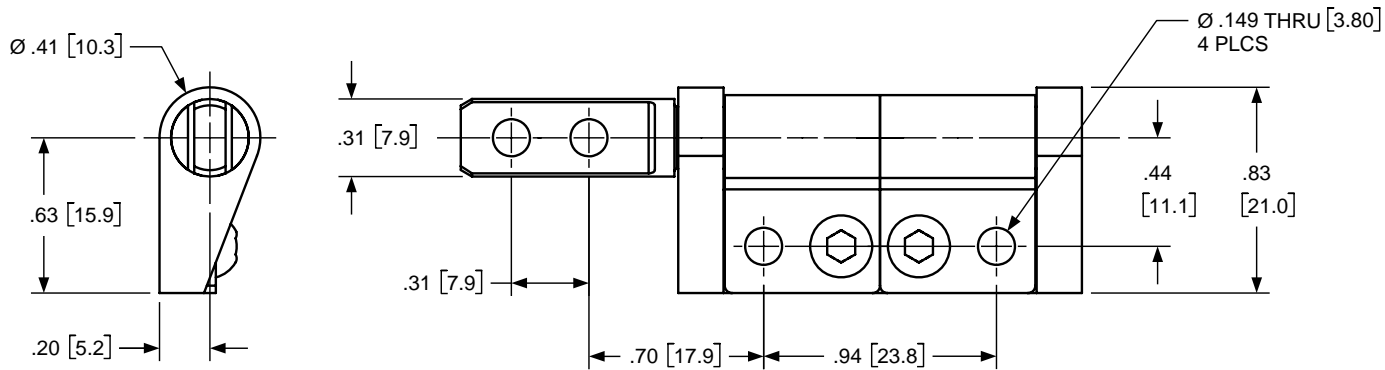
Material

- Steel Band, Shaft
- Zinc Housing
- Copper Base Grease

Friction Hinge Features

- Constant torque friction hinge.
- Available in balance or unbalance torque configurations.
- Hinge rotates 360° and provides infinite number of holding positions.
- All bands are nickel plated for extra corrosion resistance.
- Different finishes available for cosmetics requirements.
- All hinges have been tested to meet a minimum life of 30,000 cycles.
- Operating temperature: 0 – 212°F
- Smooth feel and consistent torque is maintained over the life of the hinge (+/- 15% of nominal).
- Hinges have negligible spring back with no backlash.
- All our hinges are RoHS compliant.

Lead	Under 100 ppm
Cadmium	Under 5 ppm
Mercury	Under 5 ppm
Hexavalent Chromium	Under 5 ppm



TORQUE SPECIFICATIONS

PART NUMBER	CW	CCW
2000-0401-HNG L		
2000-0401-HNG R		

HANAYA		TITLE		
<small>ALL INFORMATION ON THIS PRINT ARE PROPRIETARY TO HANAYA, AND SHALL NOT BE USED IN WHOLE OR IN PART WITHOUT HANAYA'S CONSENT.</small>		ENGLISH [METRIC]		MATERIAL
		TOLERANCES		ZINC HOUSING STEEL BAND & SHAFT
SUITABLE MOUNTING SCREWS		METRIC	ENGLISH	SIZE
FRACTIONAL	6-32 UNC	.X ±.3 MM	.XX ±.015 IN	DWG NO.
METRIC	M3.5 X 0.6	.XX ±.13 MM	.XXX ±.005 IN	
		.XXX ±.005 MM	.XXXX ±.002 IN	2000-0401-HNG L & R
		ANGLE ± 1°		

HANAYA



2000-0402-HNG L

Torque Range

- LOW: 14.0 – 20.0 in.lb ± 15%
- MED: 18.0 – 26.0 in.lb ± 15%
- HIGH: 22.0 – 32.0 in.lb ± 15%

Overall Dimensions

- 3.27" L X 1.25" W X 0.41" H

Material

- Steel Band, Shaft
- Zinc Housing
- Copper Base Grease

Friction Hinge Features

- Constant torque friction hinge.
- Available in balance or unbalance torque configurations.
- Hinge rotates 360° and provides infinite number of holding positions.
- All bands are nickel plated for extra corrosion resistance.
- Different finishes available for cosmetics requirements.
- All hinges have been tested to meet a minimum life of 30,000 cycles.
- Operating temperature: 0 – 212°F
- Smooth feel and consistent torque is maintained over the life of the hinge (+/- 15% of nominal).
- Hinges have negligible spring back with no backlash.
- All our hinges are RoHS compliant.

Lead	Under 100 ppm
Cadmium	Under 5 ppm
Mercury	Under 5 ppm
Hexavalent Chromium	Under 5 ppm

HANAYA



2000-0402-HNG R

Torque Range

- LOW: 14.0 – 20.0 in.lb ± 15%
- MED: 18.0 – 26.0 in.lb ± 15%
- HIGH: 22.0 – 32.0 in.lb ± 15%

Overall Dimensions

- 3.27" L X 1.25" W X 0.41" H

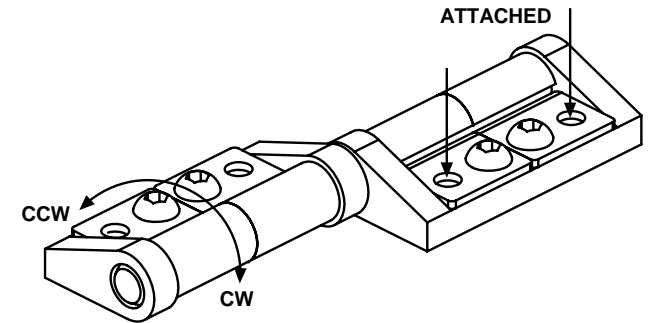
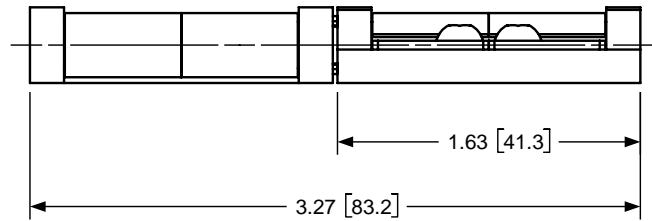
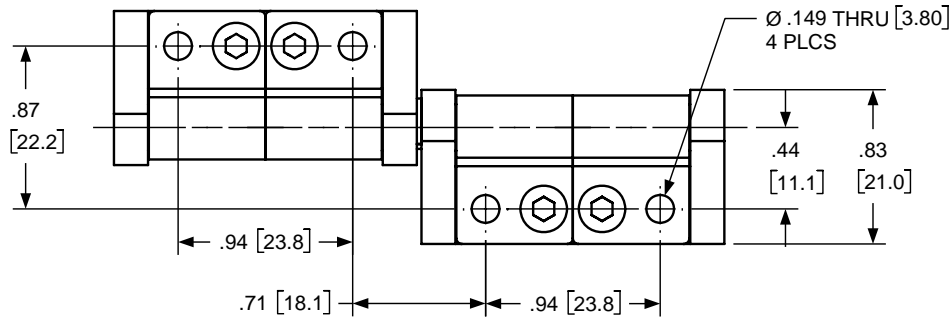
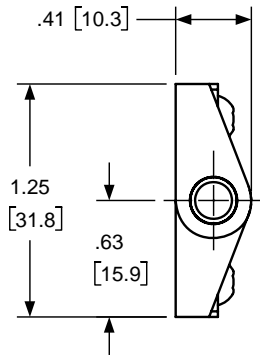
Material

- Steel Band, Shaft
- Zinc Housing
- Copper Base Grease

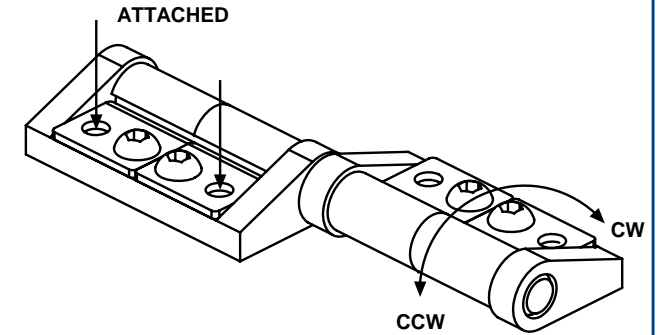
Friction Hinge Features

- Constant torque friction hinge.
- Available in balance or unbalance torque configurations.
- Hinge rotates 360° and provides infinite number of holding positions.
- All bands are nickel plated for extra corrosion resistance.
- Different finishes available for cosmetics requirements.
- All hinges have been tested to meet a minimum life of 30,000 cycles.
- Operating temperature: 0 – 212°F
- Smooth feel and consistent torque is maintained over the life of the hinge (+/- 15% of nominal).
- Hinges have negligible spring back with no backlash.
- All our hinges are RoHS compliant.

Lead	Under 100 ppm
Cadmium	Under 5 ppm
Mercury	Under 5 ppm
Hexavalent Chromium	Under 5 ppm



2000-0402-HNG L



2000-0402-HNG R

TORQUE SPECIFICATIONS

PART NUMBER	CW	CCW
2000-0402-HNG L		
2000-0402-HNG R		

HANAYA		INTERFACE DRAWING			
<small>ALL INFORMATION ON THIS PRINT ARE PROPRIETARY TO HANAYA, AND SHALL NOT BE USED IN WHOLE OR IN PART WITHOUT HANAYA'S CONSENT.</small>		ENGLISH [METRIC]		MATERIAL	
		TOLERANCES		ZINC HOUSING STEEL BAND & SHAFT	
SUITABLE MOUNTING SCREWS		METRIC	ENGLISH	SIZE	DWG NO.
FRACTIONAL	6-32 UNC	.X ±.3 MM	.XX ±.015 IN	B	2000-0402-HNG L & R
METRIC	M3.5 X 0.6	.XX ±.13 MM	.XXX ±.005 IN		
		.XXX ±.005 MM	.XXXX ±.0002 IN		
		ANGLE ± 1°			

HANAYA



2000-0501-HNG

Torque Range

- LOW: 8.0 in.lb ± 15%
- MED: 10.0 in.lb ± 15%
- HIGH: 12.0 in.lb ± 15%

Overall Dimensions

- 2.25" L X 0.34" W X 0.34" H

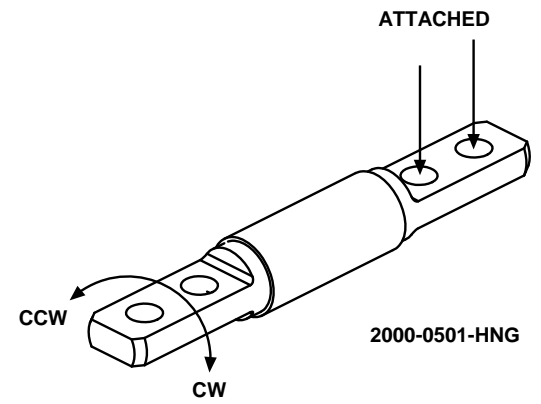
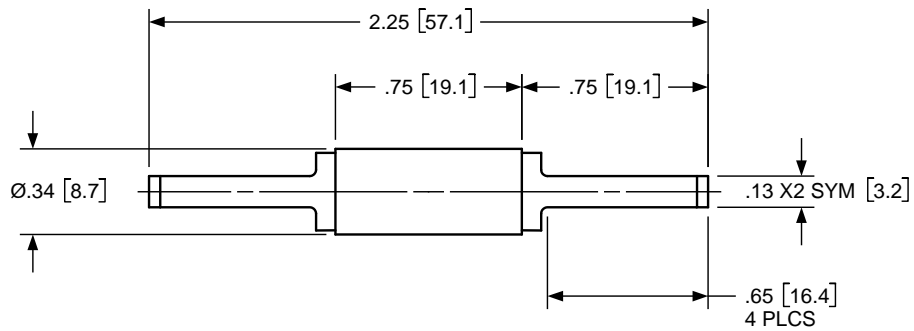
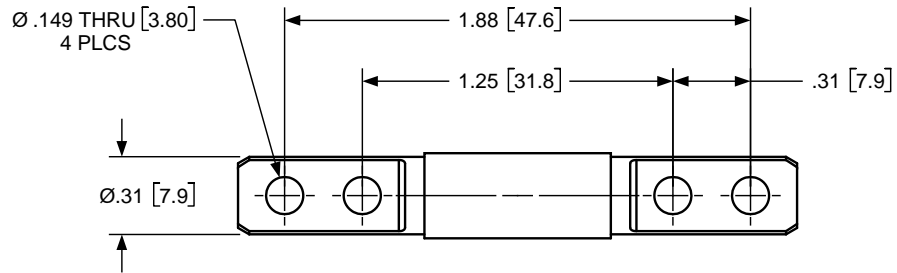
Material

- Steel Band, Shaft
- Copper Base Grease

Friction Hinge Features

- Constant torque friction hinge.
- Available in balance torque configuration.
- Hinge rotates 360° and provides infinite number of holding positions.
- All bands are nickel plated for extra corrosion resistance.
- Different finishes available for cosmetics requirements.
- All hinges have been tested to meet a minimum life of 30,000 cycles.
- Operating temperature: 0 – 212°F
- Smooth feel and consistent torque is maintained over the life of the hinge (+/- 15% of nominal).
- Hinges have negligible spring back with no backlash.
- All our hinges are RoHS compliant.

Lead	Under 100 ppm
Cadmium	Under 5 ppm
Mercury	Under 5 ppm
Hexavalent Chromium	Under 5 ppm



TORQUE SPECIFICATIONS		
PART NUMBER	CW	CCW
2000-0501-HNG		

HANAYA		TITLE		
<small>ALL INFORMATION ON THIS PRINT ARE PROPRIETARY TO HANAYA, AND SHALL NOT BE USED IN WHOLE OR IN PART WITHOUT HANAYA'S CONSENT.</small>		ENGLISH / METRIC		MATERIAL
		TOLERANCES		STEEL BAND & SHAFT
SUITABLE MOUNTING SCREWS		METRIC	ENGLISH	SIZE
FRACTIONAL	6-32 UNC	.X ±.3 MM	.XX ±.015 IN	DWG NO
METRIC	M3.5 X 0.6	.XX ±.13 MM	.XXX ±.005 IN	2000-0501-HNG
		.XXX ±.005 MM	.XXXX ±.0002 IN	
		ANGLE ± 1°		



2000-0601-HNG

Torque Range

- Damping Torque Range: 1.0 – 3.0 in.lb \pm 20%
- Customizable Damping Torque

Overall Dimensions

- 1.75" L X 0.31" W X 0.31" H

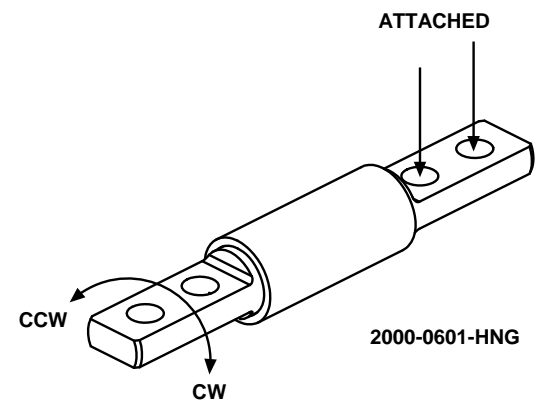
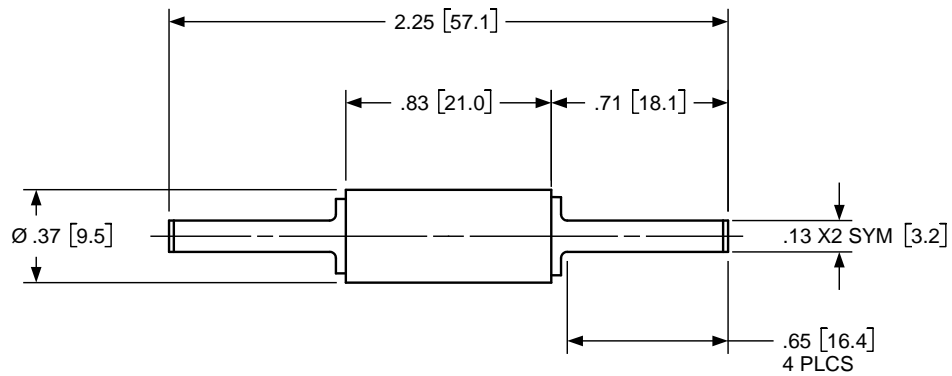
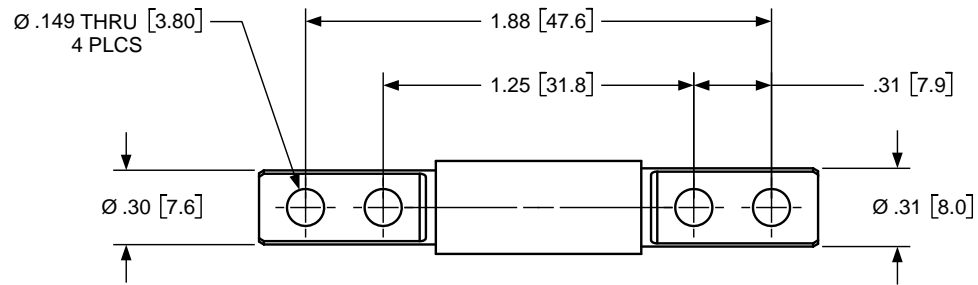
Material

- Aluminum Shaft, Housing
- Damping Grease

Friction Hinge Features

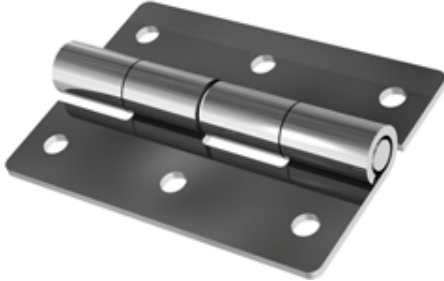
- Constant torque friction hinge.
- Available in balance torque configuration.
- Hinge rotates 360° and provides infinite number of holding positions.
- Different finishes available for cosmetics requirements.
- All hinges have been tested to meet a minimum life of 30,000 cycles.
- Operating temperature: 60 – 212°F
- Smooth feel and consistent torque is maintained over the life of the hinge (+/- 15% of nominal).
- Hinges have negligible spring back with no backlash.
- All our hinges are RoHS compliant.

Lead	Under 100 ppm
Cadmium	Under 5 ppm
Mercury	Under 5 ppm
Hexavalent Chromium	Under 5 ppm



HANAYA		TITLE INTERFACE DRAWING			
ALL INFORMATION ON THIS PRINT ARE PROPRIETARY TO HANAYA, AND SHALL NOT BE USED IN WHOLE OR IN PART WITHOUT HANAYA'S CONSENT.		ENGLISH / METRIC TOLERANCES		MATERIAL ALUMINUM SHAFT & HOUSING	
		METRIC	ENGLISH	SIZE B	DWG NO 2000-0601-HNG
SUITABLE MOUNTING SCREWS		METRIC	ENGLISH		
FRACTIONAL	6-32 UNC	.X ±.3 MM .XX ±.13 MM .XXX ±.005 MM	.XX ±.015 IN .XXX ±.005 IN .XXXX ±.0002 IN		
METRIC	M3.5 X 0.6				
ANGLE ± 1°					

HANAYA



2000-0701-HNG

Torque Range

- LOW: 14.0 – 20.0 in.lb ± 15%
- MED: 18.0 – 26.0 in.lb ± 15%
- HIGH: 22.0 – 32.0 in.lb ± 15%

Overall Dimensions

- 1.75" L X 0.28" W X 0.28" H

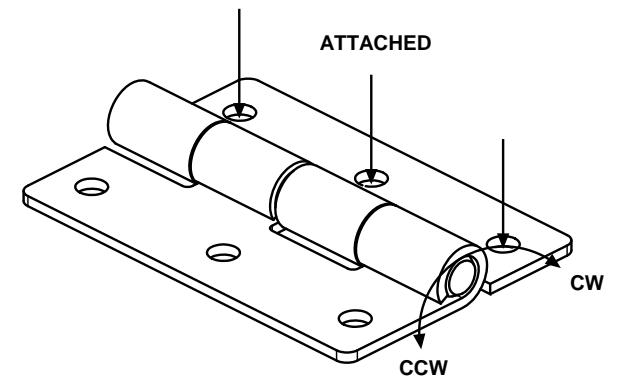
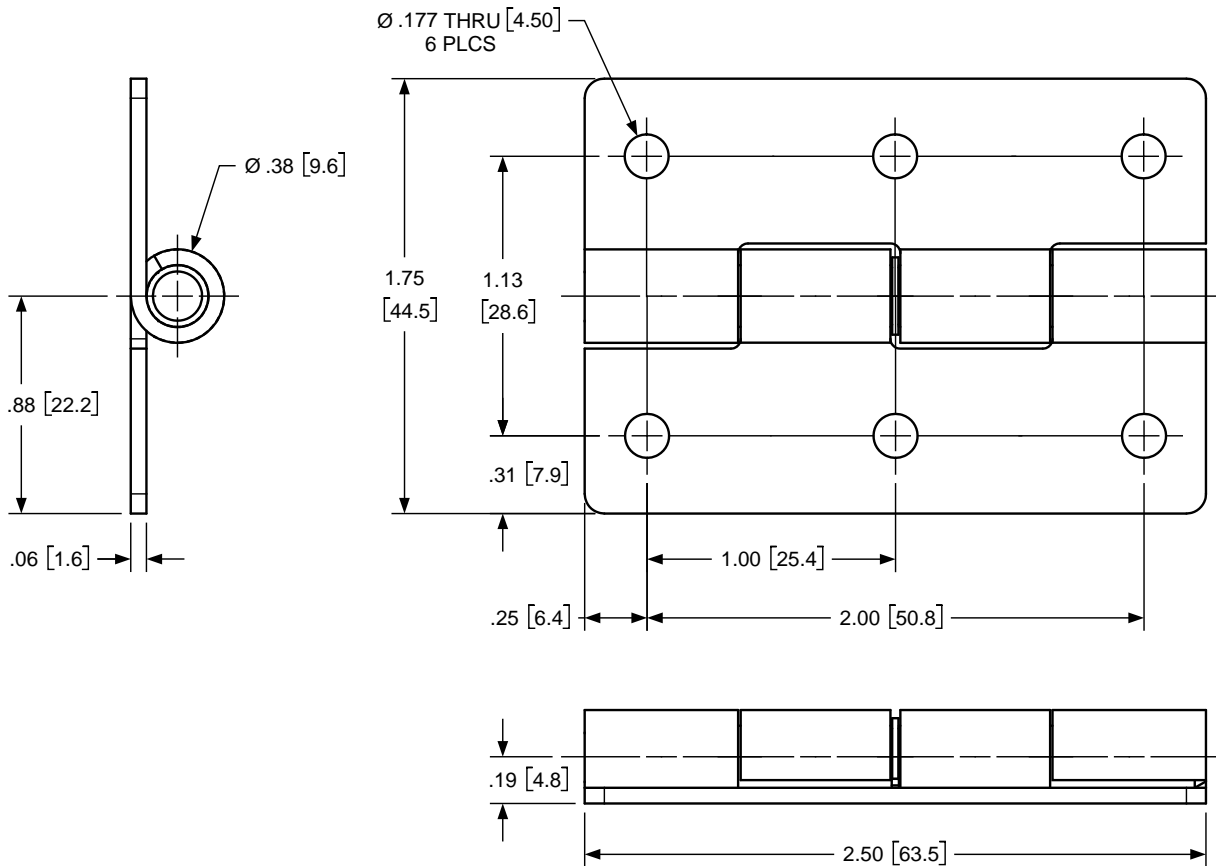
Material

- Steel Band, Shaft
- Copper Base Grease

Friction Hinge Features

- Constant torque friction hinge.
- Available in balance torque configuration.
- Hinge rotates 360° and provides infinite number of holding positions.
- All bands are nickel plated for extra corrosion resistance.
- Different finishes available for cosmetics requirements.
- All hinges have been tested to meet a minimum life of 30,000 cycles.
- Operating temperature: 0 – 212°F
- Smooth feel and consistent torque is maintained over the life of the hinge (+/- 15% of nominal).
- Hinges have negligible spring back with no backlash.
- All our hinges are RoHS compliant.

Lead	Under 100 ppm
Cadmium	Under 5 ppm
Mercury	Under 5 ppm
Hexavalent Chromium	Under 5 ppm



2000-0701-HNG

TORQUE SPECIFICATIONS		
PART NUMBER	CW	CCW
2000-0701-HNG		

HANAYA		TITLE		
<small>ALL INFORMATION ON THIS PRINT ARE PROPRIETARY TO HANAYA, AND SHALL NOT BE USED IN WHOLE OR IN PART WITHOUT HANAYA'S CONSENT.</small>		ENGLISH [METRIC]		MATERIAL
		TOLERANCES		STEEL BAND & SHAFT
SUITABLE MOUNTING SCREWS		METRIC	ENGLISH	SIZE
FRACTIONAL	8-32 UNC	.X ±.3 MM	.XX ±.015 IN	DWG NO
METRIC	M4 X 0.7	.XX ±.13 MM	.XXX ±.005 IN	2000-0701-HNG
		.XXX ±.005 MM	.XXXX ±.0002 IN	
		ANGLE ± 1°		

HANAYA



3000-0001-HNG L

Torque Range

- LOW: 10.0 – 15.0 in.lb ± 15%
- MED: 12.0 – 17.0 in.lb ± 15%
- HIGH: 15.0 – 20.0 in.lb ± 15%

Overall Dimensions

- 1.65" L X 1.44" W X .47" H

Material

- Steel Band, Shaft
- Copper Base Grease

Friction Hinge Features

- Constant torque friction hinge.
- Available in balance or unbalance torque configurations.
- Hinge rotates 360° and provides infinite number of holding positions.
- All bands are nickel plated for extra corrosion resistance.
- Different finishes available for cosmetics requirements.
- All hinges have been tested to meet a minimum life of 30,000 cycles.
- Operating temperature: 0 – 212°F
- Smooth feel and consistent torque is maintained over the life of the hinge (+/- 15% of nominal).
- Hinges have negligible spring back with no backlash.
- All our hinges are RoHS compliant.

Lead	Under 100 ppm
Cadmium	Under 5 ppm
Mercury	Under 5 ppm
Hexavalent Chromium	Under 5 ppm



3000-0001-HNG R

Torque Range

- LOW: 10.0 – 15.0 in.lb ± 15%
- MED: 12.0 – 17.0 in.lb ± 15%
- HIGH: 15.0 – 20.0 in.lb ± 15%

Overall Dimensions

- 1.65" L X 1.44" W X .47" H

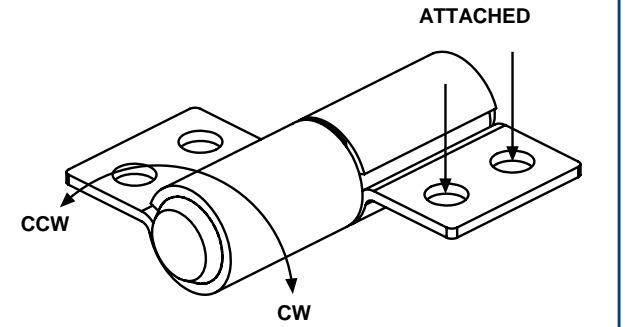
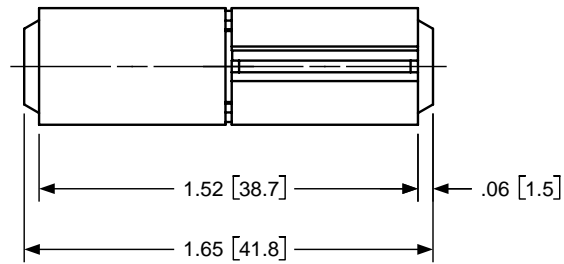
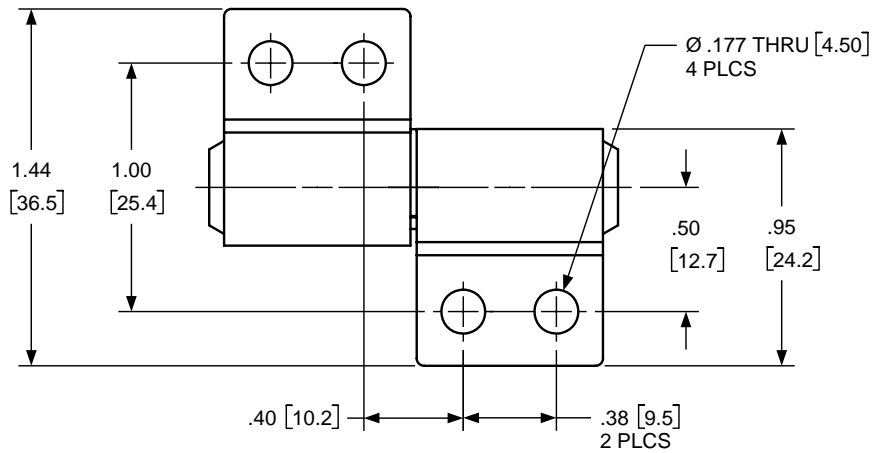
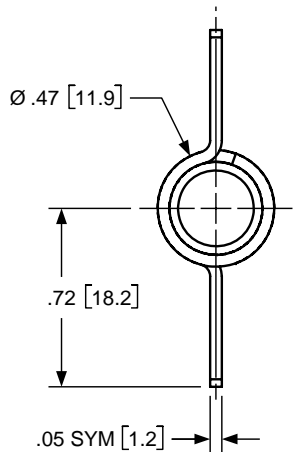
Material

- Steel Band, Shaft
- Copper Base Grease

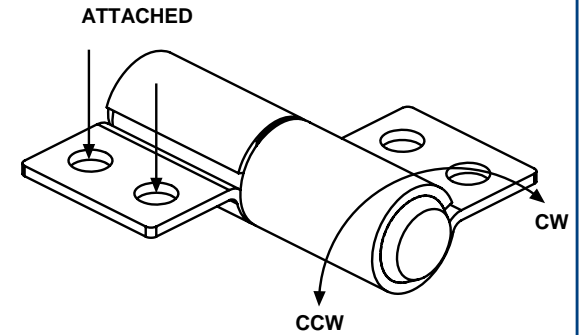
Friction Hinge Features

- Constant torque friction hinge.
- Available in balance or unbalance torque configurations.
- Hinge rotates 360° and provides infinite number of holding positions.
- All bands are nickel plated for extra corrosion resistance.
- Different finishes available for cosmetics requirements.
- All hinges have been tested to meet a minimum life of 30,000 cycles.
- Operating temperature: 0 – 212°F
- Smooth feel and consistent torque is maintained over the life of the hinge (+/- 15% of nominal).
- Hinges have negligible spring back with no backlash.
- All our hinges are RoHS compliant.

Lead	Under 100 ppm
Cadmium	Under 5 ppm
Mercury	Under 5 ppm
Hexavalent Chromium	Under 5 ppm



3000-0001-HNG L



3000-0001-HNG R

TORQUE SPECIFICATIONS		
PART NUMBER	CW	CCW
3000-0001-HNG L		
3000-0001-HNG R		

HANAYA		INTERFACE DRAWING		
<small>ALL INFORMATION ON THIS PRINT ARE PROPRIETARY TO HANAYA, AND SHALL NOT BE USED IN WHOLE OR IN PART WITHOUT HANAYA'S CONSENT.</small>		ENGLISH [METRIC]		MATERIAL
		TOLERANCES		STEEL BAND & SHAFT
SUITABLE MOUNTING SCREWS		METRIC	ENGLISH	SIZE DWG NO.
FRACTIONAL	8-32 UNC	.X ±.3 MM .XX ±.13 MM .XXX ±.005 MM	.XX ±.015 IN .XXX ±.005 IN .XXXX ±.002 IN	3000-0001-HNG L & R
METRIC	M4 X 0.7	ANGLE ± 1°		

HANAYA



3000-0002-HNG L

Torque Range

- LOW: 20.0 – 30.0 in.lb ± 15%
- MED: 24.0 – 34.0 in.lb ± 15%
- HIGH: 30.0 – 40.0 in.lb ± 15%

Overall Dimensions

- 3.15" L X 1.44" W X .47" H

Material

- Steel Band, Shaft
- Copper Base Grease

Friction Hinge Features

- Constant torque friction hinge.
- Available in balance or unbalance torque configurations.
- Hinge rotates 360° and provides infinite number of holding positions.
- All bands are nickel plated for extra corrosion resistance.
- Different finishes available for cosmetics requirements.
- All hinges have been tested to meet a minimum life of 30,000 cycles.
- Operating temperature: 0 – 212°F
- Smooth feel and consistent torque is maintained over the life of the hinge (+/- 15% of nominal).
- Hinges have negligible spring back with no backlash.
- All our hinges are RoHS compliant.

Lead	Under 100 ppm
Cadmium	Under 5 ppm
Mercury	Under 5 ppm
Hexavalent Chromium	Under 5 ppm

HANAYA



3000-0002-HNG R

Torque Range

- LOW: 20.0 – 30.0 in.lb ± 15%
- MED: 24.0 – 34.0 in.lb ± 15%
- HIGH: 30.0 – 40.0 in.lb ± 15%

Overall Dimensions

- 3.15" L X 1.44" W X .47" H

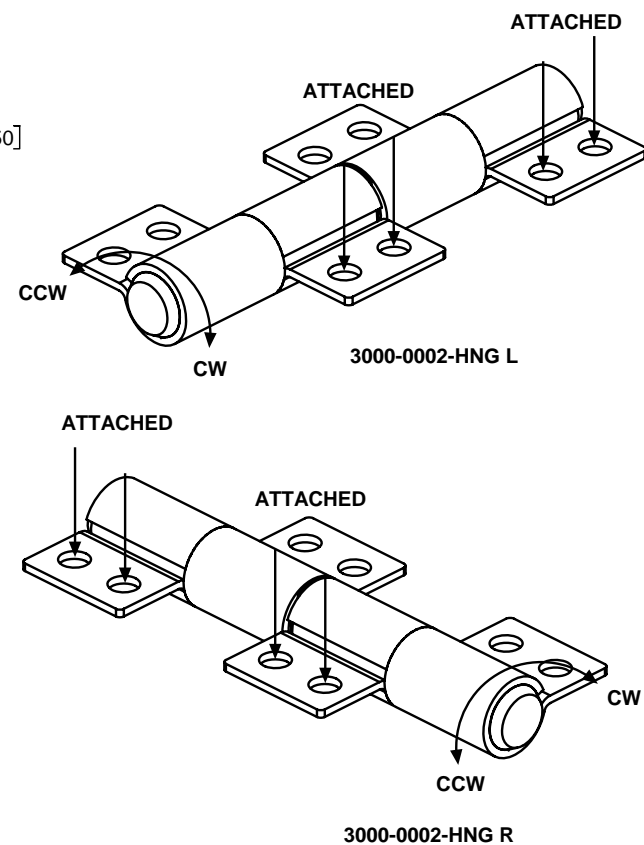
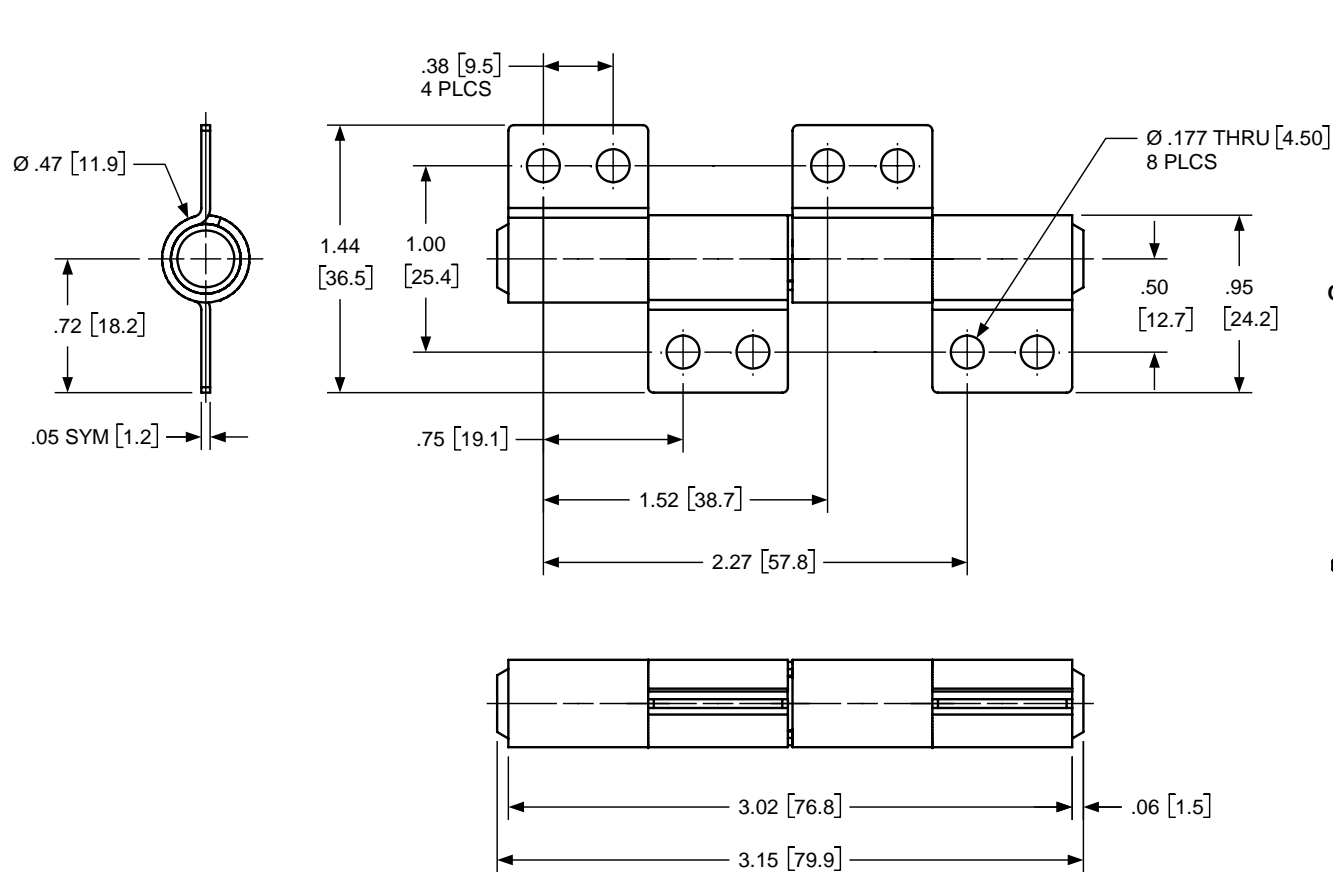
Material

- Steel Band, Shaft
- Copper Base Grease

Friction Hinge Features

- Constant torque friction hinge.
- Available in balance or unbalance torque configurations.
- Hinge rotates 360° and provides infinite number of holding positions.
- All bands are nickel plated for extra corrosion resistance.
- Different finishes available for cosmetics requirements.
- All hinges have been tested to meet a minimum life of 30,000 cycles.
- Operating temperature: 0 – 212°F
- Smooth feel and consistent torque is maintained over the life of the hinge (+/- 15% of nominal).
- Hinges have negligible spring back with no backlash.
- All our hinges are RoHS compliant.

Lead	Under 100 ppm
Cadmium	Under 5 ppm
Mercury	Under 5 ppm
Hexavalent Chromium	Under 5 ppm



TORQUE SPECIFICATIONS		
PART NUMBER	CW	CCW
3000-0002-HNG L		
3000-0002-HNG R		

HANAYA		TITLE		
ALL INFORMATION ON THIS PRINT ARE PROPRIETARY TO HANAYA, AND SHALL NOT BE USED IN WHOLE OR IN PART WITHOUT HANAYA'S CONSENT.		INTERFACE DRAWING		
SUITABLE MOUNTING SCREWS		TOLERANCES		MATERIAL
FRACTIONAL	8-32 UNC	METRIC	ENGLISH	STEEL BAND & SHAFT
METRIC	M4 X 0.7	.X ±.3 MM	.XX ±.015 IN	SIZE DWG NO. 3000-0002-HNG L & R
		.XX ±.13 MM	.XXX ±.005 IN	
		.XXX ±.005 MM	.XXXX ±.0002 IN	
		ANGLE ± 1°		

HANAYA



3000-0011-HNG L

Torque Range

- LOW: 4.0 – 6.0 in.lb \pm 15%
- MED: 5.0 – 8.0 in.lb \pm 15%
- HIGH: 7.0 – 10.0 in.lb \pm 15%

Overall Dimensions

- 0.90" L X 2.25" W X .47" H

Material

- Steel Band, Shaft
- Copper Base Grease

Friction Hinge Features

- Constant torque friction hinge.
- Available in balance or unbalance torque configurations.
- Hinge rotates 360° and provides infinite number of holding positions.
- All bands are nickel plated for extra corrosion resistance.
- Different finishes available for cosmetics requirements.
- All hinges have been tested to meet a minimum life of 30,000 cycles.
- Operating temperature: 0 – 212°F
- Smooth feel and consistent torque is maintained over the life of the hinge (+/- 15% of nominal).
- Hinges have negligible spring back with no backlash.
- All our hinges are RoHS compliant.

Lead	Under 100 ppm
Cadmium	Under 5 ppm
Mercury	Under 5 ppm
Hexavalent Chromium	Under 5 ppm



3000-0011-HNG R

Torque Range

- LOW: 4.0 – 6.0 in.lb ± 15%
- MED: 5.0 – 8.0 in.lb ± 15%
- HIGH: 7.0 – 10.0 in.lb ± 15%

Overall Dimensions

- 0.90" L X 2.25" W X .47" H

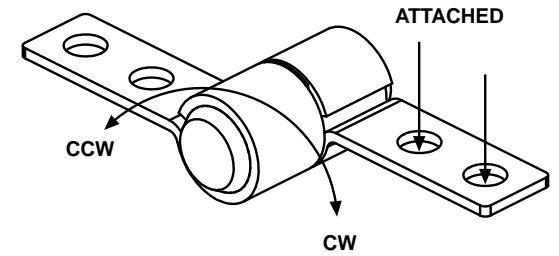
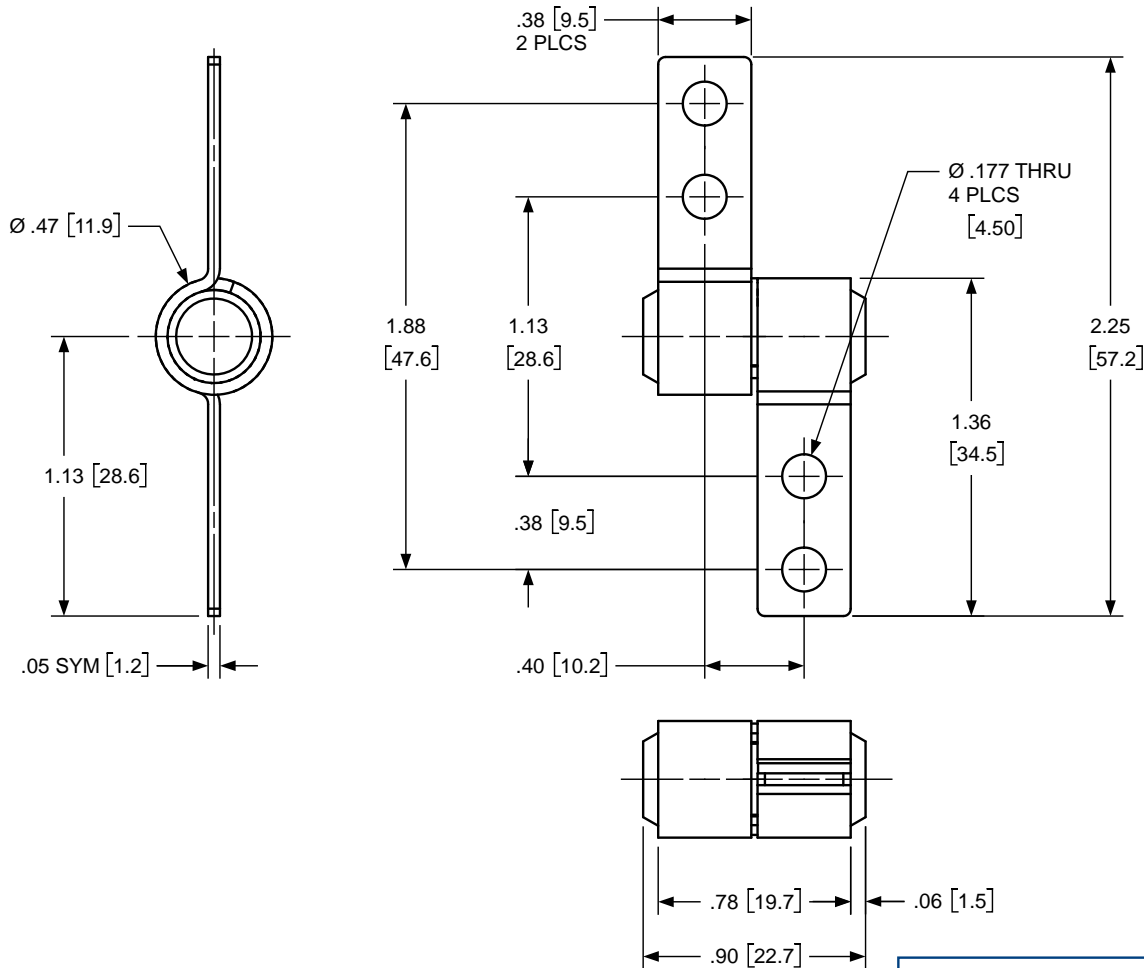
Material

- Steel Band, Shaft
- Copper Base Grease

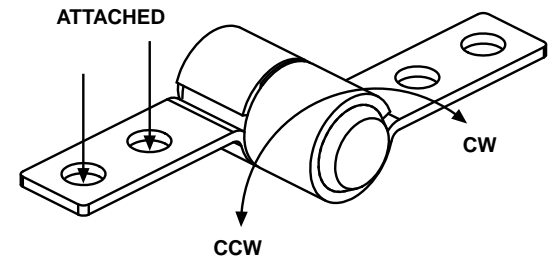
Friction Hinge Features

- Constant torque friction hinge.
- Available in balance or unbalance torque configurations.
- Hinge rotates 360° and provides infinite number of holding positions.
- All bands are nickel plated for extra corrosion resistance.
- Different finishes available for cosmetics requirements.
- All hinges have been tested to meet a minimum life of 30,000 cycles.
- Operating temperature: 0 – 212°F
- Smooth feel and consistent torque is maintained over the life of the hinge (+/- 15% of nominal).
- Hinges have negligible spring back with no backlash.
- All our hinges are RoHS compliant.

Lead	Under 100 ppm
Cadmium	Under 5 ppm
Mercury	Under 5 ppm
Hexavalent Chromium	Under 5 ppm



3000-0011-HNG L

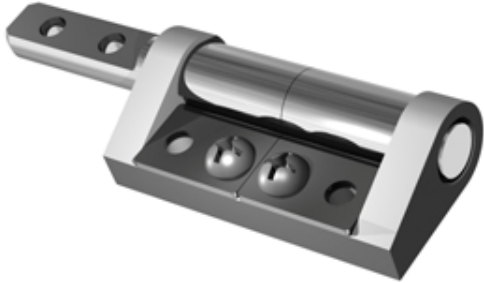


3000-0011-HNG R

TORQUE SPECIFICATIONS		
PART NUMBER	CW	CCW
3000-0011-HNG L		
3000-0011-HNG R		

HANAYA		TITLE		
<small>ALL INFORMATION ON THIS PRINT ARE PROPRIETARY TO HANAYA, AND SHALL NOT BE USED IN WHOLE OR IN PART WITHOUT HANAYA'S CONSENT.</small>		ENGLISH [METRIC]		MATERIAL
		TOLERANCES		STEEL BAND & SHAFT
SUITABLE MOUNTING SCREWS		METRIC	ENGLISH	SIZE DWG NO.
FRACTIONAL	8-32 UNC	.X ±.3 MM	.XX ±.015 IN	3000-0011-HNG L & R
METRIC	M4 X 0.7	.XX ±.13 MM	.XXX ±.005 IN	
		.XXX ±.005 MM	.XXXX ±.002 IN	
		ANGLE ± 1°		

HANAYA



3000-0401-HNG L

Torque Range

- LOW: 20.0 – 30.0 in.lb ± 15%
- MED: 24.0 – 34.0 in.lb ± 15%
- HIGH: 30.0 – 40.0 in.lb ± 15%

Overall Dimensions

- 3.25" L X 0.99" W X .55" H

Material

- Steel Band, Shaft
- Zinc Housing
- Copper Base Grease

Friction Hinge Features

- Constant torque friction hinge.
- Available in balance or unbalance torque configurations.
- Hinge rotates 360° and provides infinite number of holding positions.
- All bands are nickel plated for extra corrosion resistance.
- Different finishes available for cosmetics requirements.
- All hinges have been tested to meet a minimum life of 30,000 cycles.
- Operating temperature: 0 – 212°F
- Smooth feel and consistent torque is maintained over the life of the hinge (+/- 15% of nominal).
- Hinges have negligible spring back with no backlash.
- All our hinges are RoHS compliant.

Lead	Under 100 ppm
Cadmium	Under 5 ppm
Mercury	Under 5 ppm
Hexavalent Chromium	Under 5 ppm

HANAYA



3000-0401-HNG R

Torque Range

- LOW: 20.0 – 30.0 in.lb ± 15%
- MED: 24.0 – 34.0 in.lb ± 15%
- HIGH: 30.0 – 40.0 in.lb ± 15%

Overall Dimensions

- 3.25" L X 0.99" W X .55" H

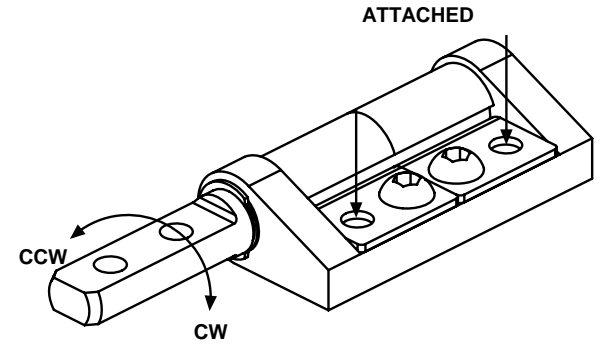
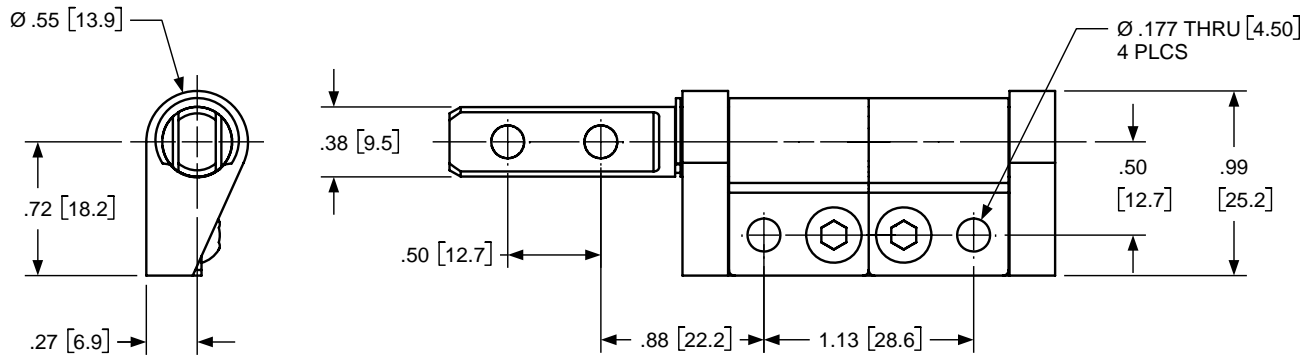
Material

- Steel Band, Shaft
- Zinc Housing
- Copper Base Grease

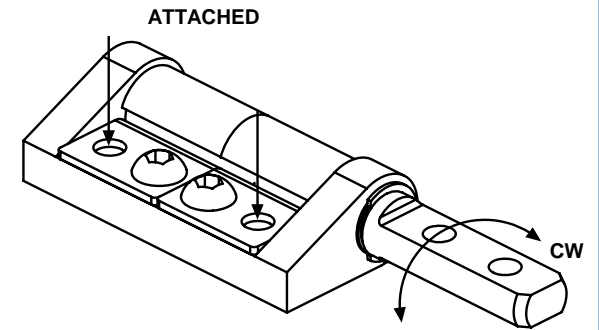
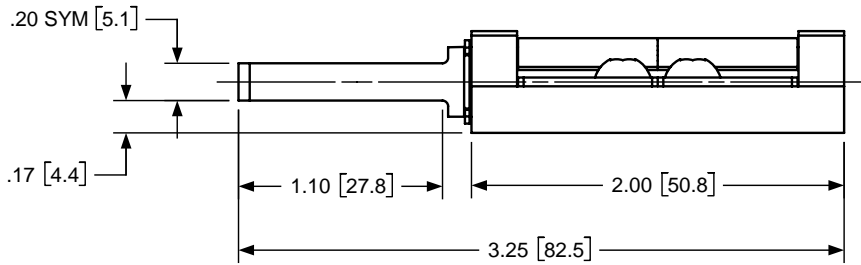
Friction Hinge Features

- Constant torque friction hinge.
- Available in balance or unbalance torque configurations.
- Hinge rotates 360° and provides infinite number of holding positions.
- All bands are nickel plated for extra corrosion resistance.
- Different finishes available for cosmetics requirements.
- All hinges have been tested to meet a minimum life of 30,000 cycles.
- Operating temperature: 0 – 212°F
- Smooth feel and consistent torque is maintained over the life of the hinge (+/- 15% of nominal).
- Hinges have negligible spring back with no backlash.
- All our hinges are RoHS compliant.

Lead	Under 100 ppm
Cadmium	Under 5 ppm
Mercury	Under 5 ppm
Hexavalent Chromium	Under 5 ppm



3000-0401-HNG L



3000-0401-HNG R

TORQUE SPECIFICATIONS		
PART NUMBER	CW	CCW
3000-0401-HNG L		
3000-0401-HNG R		

HANAYA		TITLE			
ALL INFORMATION ON THIS PRINT ARE PROPRIETARY TO HANAYA, AND SHALL NOT BE USED IN WHOLE OR IN PART WITHOUT HANAYA'S CONSENT.		INTERFACE DRAWING			
SUITABLE MOUNTING SCREWS		TOLERANCES		MATERIAL	
FRACTIONAL	8-32 UNC	METRIC	ENGLISH	SIZE	DWG NO.
METRIC	M4 X 0.7	.X ±.3 MM	.XX ±.015 IN	B	3000-0401-HNG L & R
		.XX ±.13 MM	.XXX ±.005 IN		
		.XXX ±.005 MM	.XXXX ±.0002 IN		
		ANGLE ± 1°			

HANAYA



3000-0402-HNG L

Torque Range

- LOW: 20.0 – 30.0 in.lb ± 15%
- MED: 24.0 – 34.0 in.lb ± 15%
- HIGH: 30.0 – 40.0 in.lb ± 15%

Overall Dimensions

- 4.03" L X 1.44" W X .55" H

Material

- Steel Band, Shaft
- Zinc Housing
- Copper Base Grease

Friction Hinge Features

- Constant torque friction hinge.
- Available in balance or unbalance torque configurations.
- Hinge rotates 360° and provides infinite number of holding positions.
- All bands are nickel plated for extra corrosion resistance.
- Different finishes available for cosmetics requirements.
- All hinges have been tested to meet a minimum life of 30,000 cycles.
- Operating temperature: 0 – 212°F
- Smooth feel and consistent torque is maintained over the life of the hinge (+/- 15% of nominal).
- Hinges have negligible spring back with no backlash.
- All our hinges are RoHS compliant.

Lead	Under 100 ppm
Cadmium	Under 5 ppm
Mercury	Under 5 ppm
Hexavalent Chromium	Under 5 ppm

HANAYA



3000-0402-HNG R

Torque Range

- LOW: 20.0 – 30.0 in.lb ± 15%
- MED: 24.0 – 34.0 in.lb ± 15%
- HIGH: 30.0 – 40.0 in.lb ± 15%

Overall Dimensions

- 4.03" L X 1.44" W X .55" H

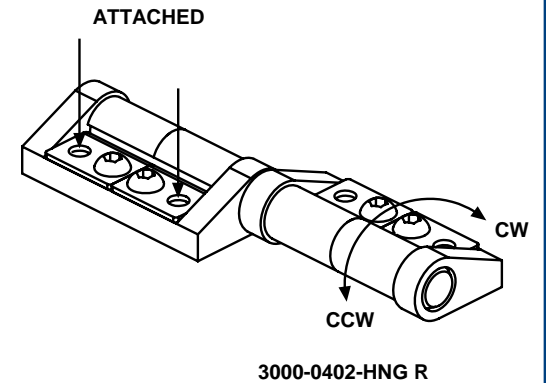
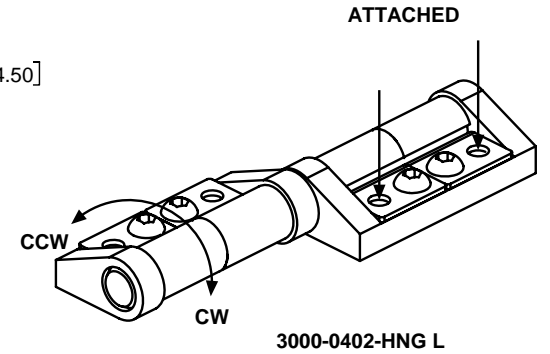
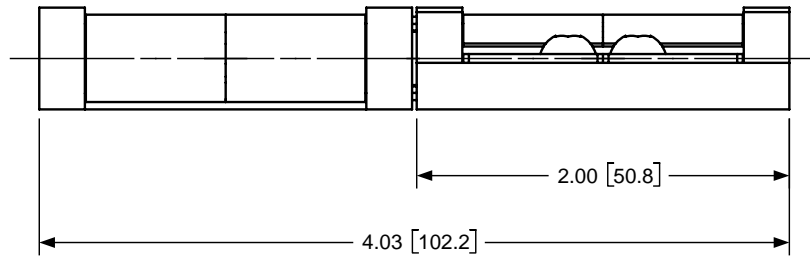
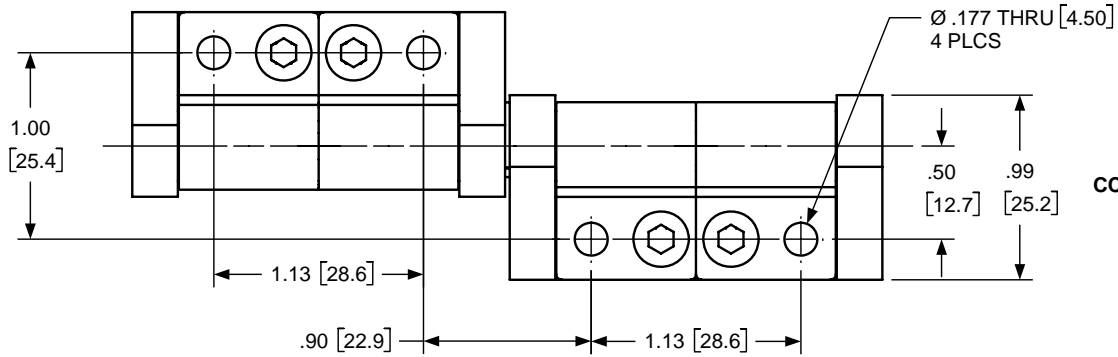
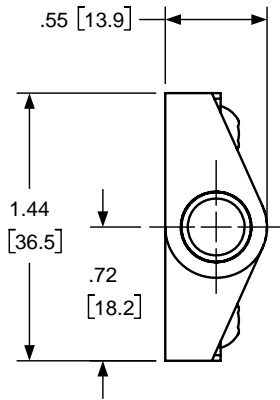
Material

- Steel Band, Shaft
- Zinc Housing
- Copper Base Grease

Friction Hinge Features

- Constant torque friction hinge.
- Available in balance or unbalance torque configurations.
- Hinge rotates 360° and provides infinite number of holding positions.
- All bands are nickel plated for extra corrosion resistance.
- Different finishes available for cosmetics requirements.
- All hinges have been tested to meet a minimum life of 30,000 cycles.
- Operating temperature: 0 – 212°F
- Smooth feel and consistent torque is maintained over the life of the hinge (+/- 15% of nominal).
- Hinges have negligible spring back with no backlash.
- All our hinges are RoHS compliant.

Lead	Under 100 ppm
Cadmium	Under 5 ppm
Mercury	Under 5 ppm
Hexavalent Chromium	Under 5 ppm



TORQUE SPECIFICATIONS

PART NUMBER	CW	CCW
3000-0402-HNG L		
3000-0402-HNG R		

HANAYA		TITLE		
<small>ALL INFORMATION ON THIS PRINT ARE PROPRIETARY TO HANAYA, AND SHALL NOT BE USED IN WHOLE OR IN PART WITHOUT HANAYA'S CONSENT.</small>		ENGLISH [METRIC]		MATERIAL
		TOLERANCES		ZINC HOUSING STEEL BAND & SHAFT
SUITABLE MOUNTING SCREWS		METRIC	ENGLISH	SIZE DWG NO.
FRACTIONAL	8-32 UNC	.X ±.3 MM .XX ±.13 MM .XXX ±.005 MM	.XX ±.015 IN .XXX ±.005 IN .XXXX ±.002 IN	3000-0402-HNG L & R
METRIC	M4 X 0.7	ANGLE ± 1°		

HANAYA



3000-0403-HNG

Torque Range

- LOW: 20.0 – 30.0 in.lb ± 15%
- MED: 24.0 – 34.0 in.lb ± 15%
- HIGH: 30.0 – 40.0 in.lb ± 15%

Overall Dimensions

- 4.50" L X 0.99" W X .55" H

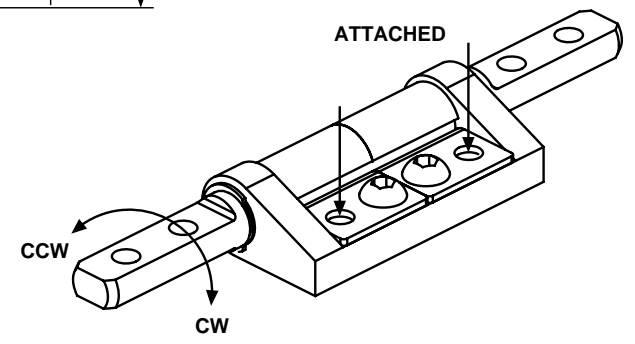
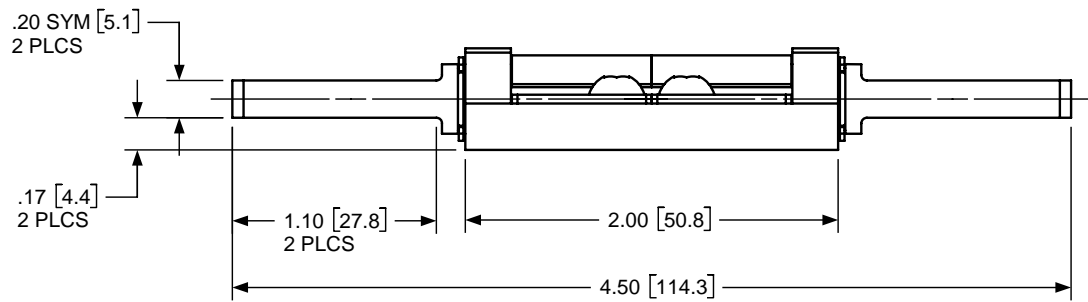
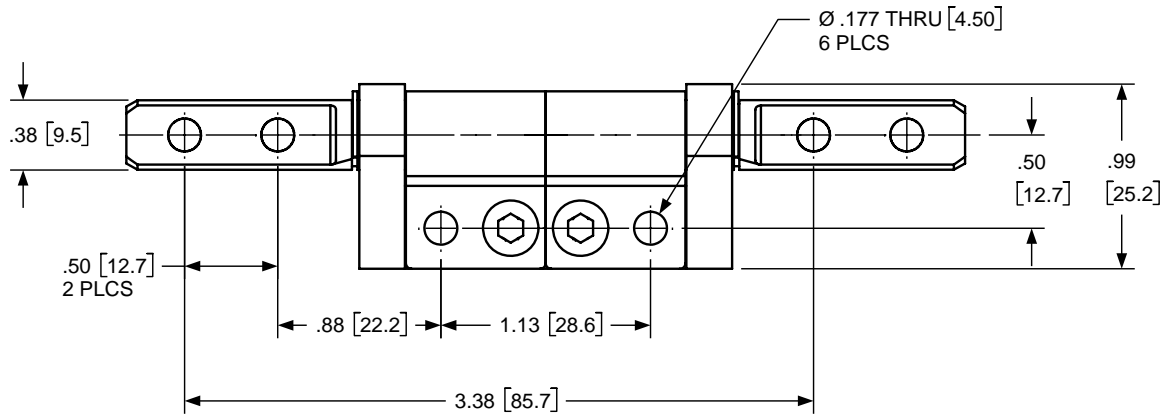
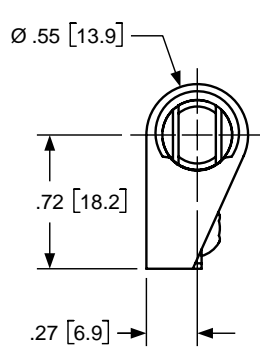
Material

- Steel Band, Shaft
- Zinc Housing
- Copper Base Grease

Friction Hinge Features

- Constant torque friction hinge.
- Available in balance or unbalance torque configurations.
- Hinge rotates 360° and provides infinite number of holding positions.
- All bands are nickel plated for extra corrosion resistance.
- Different finishes available for cosmetics requirements.
- All hinges have been tested to meet a minimum life of 30,000 cycles.
- Operating temperature: 0 – 212°F
- Smooth feel and consistent torque is maintained over the life of the hinge (+/- 15% of nominal).
- Hinges have negligible spring back with no backlash.
- All our hinges are RoHS compliant.

Lead	Under 100 ppm
Cadmium	Under 5 ppm
Mercury	Under 5 ppm
Hexavalent Chromium	Under 5 ppm

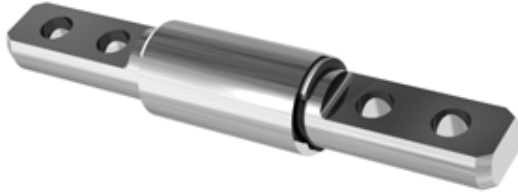


3000-0403-HNG

TORQUE SPECIFICATIONS		
PART NUMBER	CW	CCW
3000-0403-HNG		

HANAYA		TITLE		
<small>ALL INFORMATION ON THIS PRINT ARE PROPRIETARY TO HANAYA, AND SHALL NOT BE USED IN WHOLE OR IN PART WITHOUT HANAYA'S CONSENT.</small>		ENGLISH [METRIC]		MATERIAL
		TOLERANCES		ZINC HOUSING STEEL BAND & SHAFT
SUITABLE MOUNTING SCREWS		METRIC	ENGLISH	SIZE
FRACTIONAL	8-32 UNC	.X ±.3 MM	.XX ±.015 IN	DWG NO
METRIC	M4 X 0.7	.XX ±.13 MM	.XXX ±.005 IN	3000-0403-HNG
		.XXX ±.005 MM	.XXXX ±.0002 IN	
		ANGLE ± 1°		

HANAYA



3000-0501-HNG

Torque Range

- LOW: 12.0 in.lb ± 15%
- MED: 14.0 in.lb ± 15%
- HIGH: 16.0 in.lb ± 15%

Overall Dimensions

- 2.75" L X 0.49" W X 0.49" H

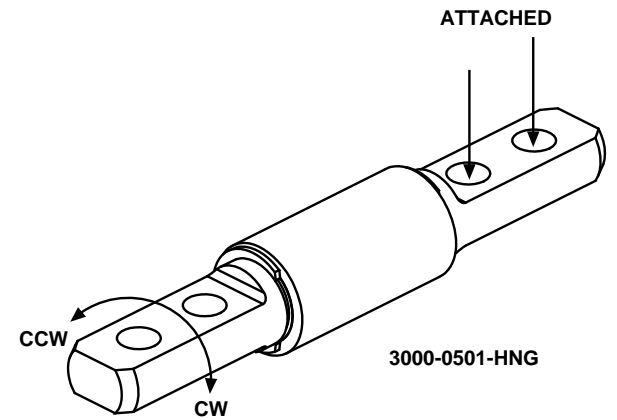
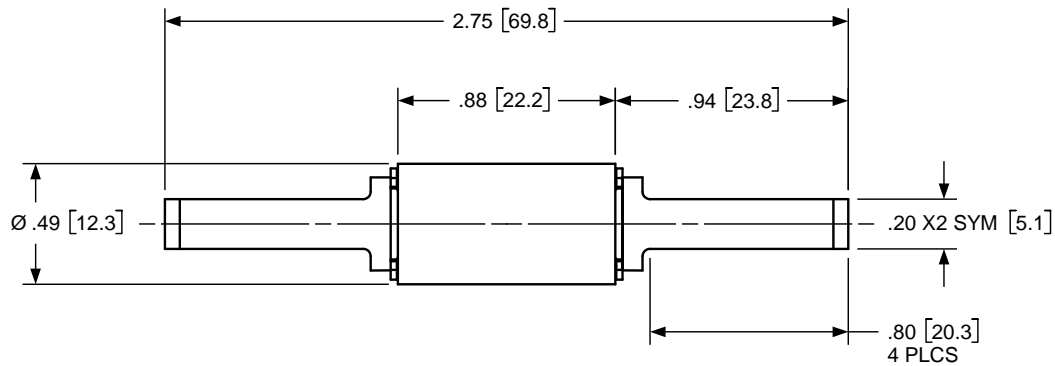
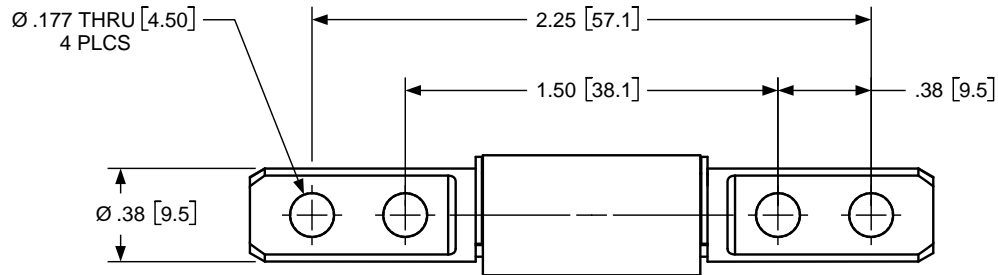
Material

- Steel Band, Shaft
- Copper Base Grease

Friction Hinge Features

- Constant torque friction hinge.
- Available in balance torque configuration.
- Hinge rotates 360° and provides infinite number of holding positions.
- All bands are nickel plated for extra corrosion resistance.
- Different finishes available for cosmetics requirements.
- All hinges have been tested to meet a minimum life of 30,000 cycles.
- Operating temperature: 0 – 212°F
- Smooth feel and consistent torque is maintained over the life of the hinge (+/- 15% of nominal).
- Hinges have negligible spring back with no backlash.
- All our hinges are RoHS compliant.

Lead	Under 100 ppm
Cadmium	Under 5 ppm
Mercury	Under 5 ppm
Hexavalent Chromium	Under 5 ppm



TORQUE SPECIFICATIONS

PART NUMBER	CW	CCW
3000-0501-HNG		

HANAYA		INTERFACE DRAWING		
<small>ALL INFORMATION ON THIS PRINT ARE PROPRIETARY TO HANAYA, AND SHALL NOT BE USED IN WHOLE OR IN PART WITHOUT HANAYA'S CONSENT.</small>		ENGLISH / METRIC TOLERANCES		MATERIAL STEEL BAND & SHAFT
		SUITABLE MOUNTING SCREWS	METRIC .X ±.3 MM .XX ±.13 MM .XXX ±.005 MM	ENGLISH .XX ±.015 IN .XXX ±.005 IN .XXXX ±.0002 IN
FRACTIONAL 8-32 UNC	METRIC M4 X 0.7	DWG NO 3000-0501-HNG		
		ANGLE ± 1°		

HANAYA



3000-0601-HNG

Torque Range

- Damping Torque Range: 3.0 – 6.0 in.lb \pm 15%
- Customizable Damping Torque

Overall Dimensions

- 2.75" L X 0.50" W X 0.50" H

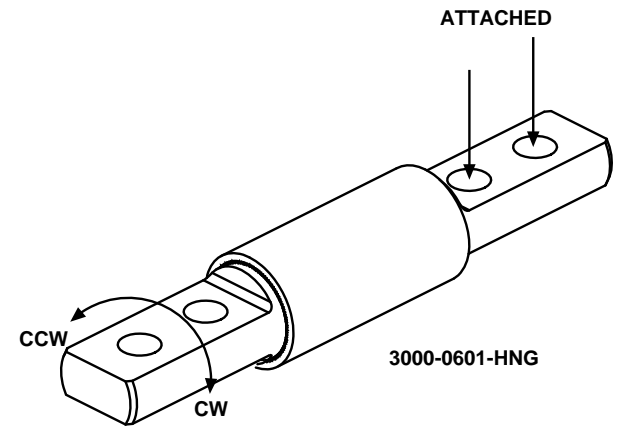
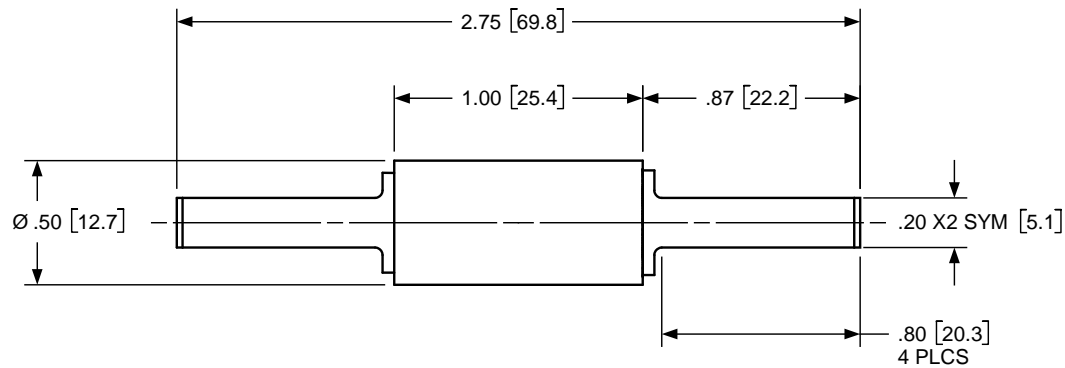
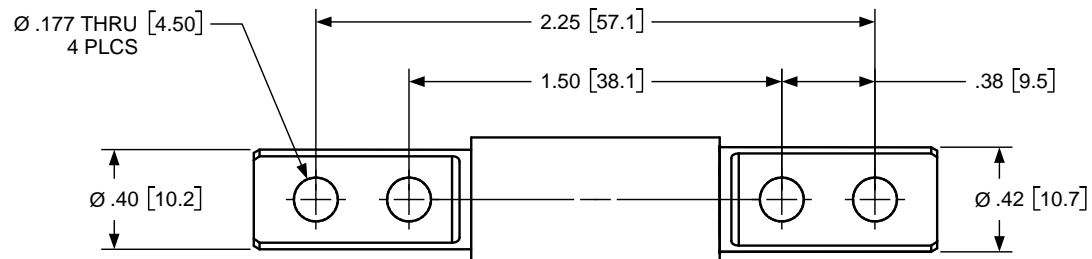
Material

- Aluminum Shaft, Housing
- Damping Grease

Friction Hinge Features

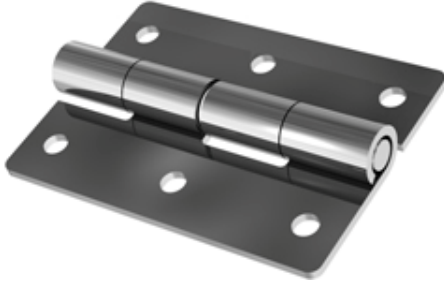
- Constant torque friction hinge.
- Available in balance torque configuration.
- Hinge rotates 360° and provides infinite number of holding positions.
- Different finishes available for cosmetics requirements.
- All hinges have been tested to meet a minimum life of 30,000 cycles.
- Operating temperature: 60 – 212°F
- Smooth feel and consistent torque is maintained over the life of the hinge (+/- 15% of nominal).
- Hinges have negligible spring back with no backlash.
- All our hinges are RoHS compliant.

Lead	Under 100 ppm
Cadmium	Under 5 ppm
Mercury	Under 5 ppm
Hexavalent Chromium	Under 5 ppm



HANAYA		TITLE		
<small>ALL INFORMATION ON THIS PRINT ARE PROPRIETARY TO HANAYA, AND SHALL NOT BE USED IN WHOLE OR IN PART WITHOUT HANAYA'S CONSENT.</small>		ENGLISH / METRIC		MATERIAL
		TOLERANCES		ALUMINUM SHAFT & HOUSING
SUITABLE MOUNTING SCREWS		METRIC	ENGLISH	SIZE
FRACTIONAL	8-32 UNC	.X ±.3 MM	.XX ±.015 IN	DWG NO
METRIC	M4 X 0.7	.XX ±.13 MM	.XXX ±.005 IN	3000-0601-HNG
		.XXX ±.005 MM	.XXXX ±.0002 IN	
ANGLE ± 1°				

HANAYA



3000-0701-HNG

Torque Range

- LOW: 20.0 – 30.0 in.lb ± 15%
- MED: 24.0 – 34.0 in.lb ± 15%
- HIGH: 30.0 – 40.0 in.lb ± 15%

Overall Dimensions

- 3.00" L X 2.00" W X 0.53" H

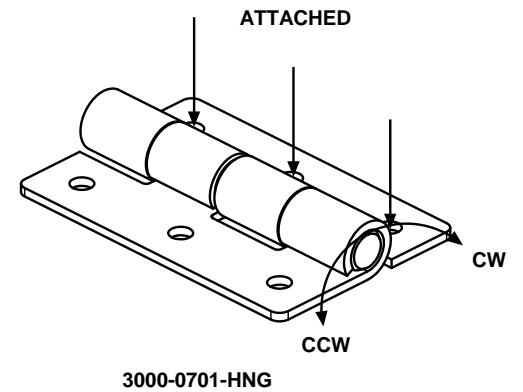
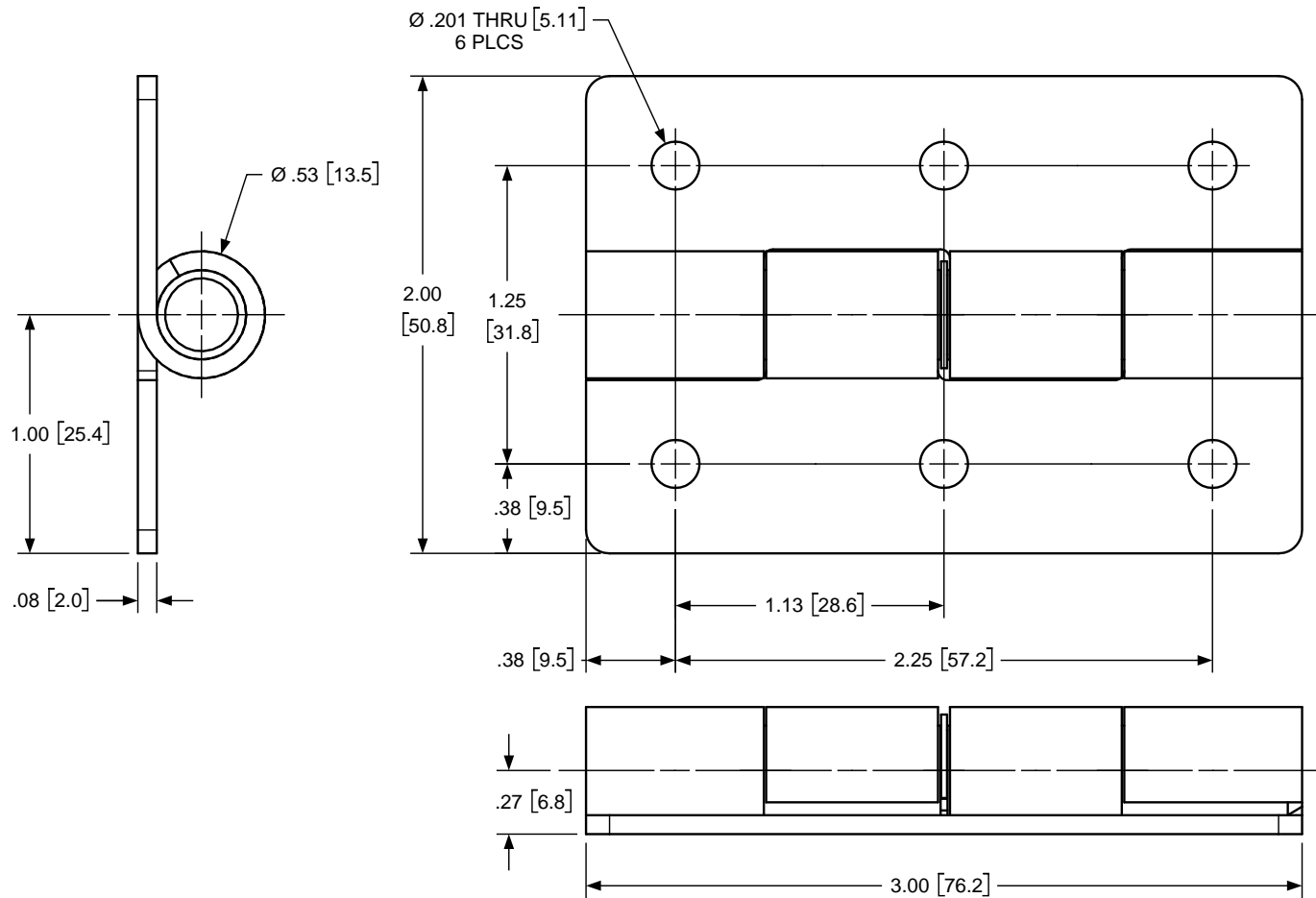
Material

- Steel Band, Shaft
- Copper Base Grease

Friction Hinge Features

- Constant torque friction hinge.
- Available in balance torque configuration.
- Hinge rotates 360° and provides infinite number of holding positions.
- All bands are nickel plated for extra corrosion resistance.
- Different finishes available for cosmetics requirements.
- All hinges have been tested to meet a minimum life of 30,000 cycles.
- Operating temperature: 0 – 212°F
- Smooth feel and consistent torque is maintained over the life of the hinge (+/- 15% of nominal).
- Hinges have negligible spring back with no backlash.
- All our hinges are RoHS compliant.

Lead	Under 100 ppm
Cadmium	Under 5 ppm
Mercury	Under 5 ppm
Hexavalent Chromium	Under 5 ppm



TORQUE SPECIFICATIONS		
PART NUMBER	CW	CCW
3000-0701-HNG		

HANAYA		TITLE		
<small>ALL INFORMATION ON THIS PRINT ARE PROPRIETARY TO HANAYA, AND SHALL NOT BE USED IN WHOLE OR IN PART WITHOUT HANAYA'S CONSENT.</small>		ENGLISH [METRIC]		MATERIAL
		TOLERANCES		STEEL BAND & SHAFT
SUITABLE MOUNTING SCREWS		METRIC	ENGLISH	SIZE
FRACTIONAL	10-24 UNC	.X ±.3 MM	.XX ±.015 IN	DWG NO
METRIC	M4.5 X 0.75	.XX ±.13 MM	.XXX ±.005 IN	3000-0701-HNG
		.XXX ±.005 MM	.XXXX ±.0002 IN	
		ANGLE ± 1°		